



COMMUNITY FOUNDATION OF  
RANDOLPH COUNTY

# SCHOLARSHIPS

An inside look at who our scholarships  
honor, memorialize, and celebrate

2026

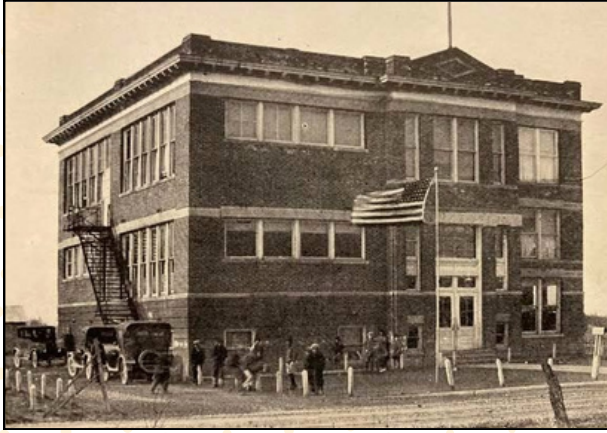


# Community Foundation of Randolph County

Our mission is to bring people and resources together to strengthen the quality of life, both now and in the future, for the residents of Randolph County. The Community Foundation of Randolph County (CFRC) is here to make our community the very best place to live, work, and raise a family. CFRC's work falls into three major categories: grant-making, donor service, and community convening. Our most visible activities are the grants and scholarships we award each year.

Most of these awards come from income earned from permanently endowed funds. Some of these endowed funds are unrestricted, meaning that the CFRC board has the responsibility to use the income as it best determines, generally in response to applications from community organizations. Scholarships and other grants come from funds that donors have established for certain purposes.

# MONROE CENTRAL JR./SR. HIGH SCHOOL A BRIEF HISTORY



**Green School**

Monroe Central School Corporation, formed in 1956, is a consolidation of Green, Stoney Creek, Parker, and Farmland schools. For two school years after the consolidation, all four schools continued to serve grades one through twelve as they had in the past. In the fall of 1958, grades seven through twelve from Stoney Creek School attended Farmland. Green and Stoney Creek schools continued as elementary schools, until the fall of 1961, when Green School was phased out.

During the school years of 1961-62 and 1962-63, Parker provided educational facilities for grades 1-4 and 7-12 for Green and Parker students; Farmland provided facilities for grades 1-4 and 7-12 from Stoney Creek and Farmland. Stoney Creek school was used by all fifth and sixth graders in the corporation.



**Stoney Creek High School**

To relieve the crowded conditions, a new high school was built. Dedicated in 1963, Monroe Central Junior-Senior High School provided educational facilities for grades 7-12 in Monroe Central School Corporation. Stoney Creek was phased out and Farmland and Parker continued as elementary schools for the corporation.

On Wednesday, April 3, 1974, Monroe Central Jr.-Sr. High School was destroyed by a tornado. Administrators, teachers, students, community members, and other volunteers worked long hours to salvage materials from the various departments and to plan for the education of 535 students for the remainder of the school year.



**Parker School**



**Farmland School**

School began on Monday, April 15, 1974, for teachers and on April 16 for students. Only three days of school had been missed because spring vacation during the week of April 8 had provided time for arrangements to be made.

Parker Elementary School served as the corporation elementary school for the remainder of the 1973-1974 school year, with Parker students attending classes in the morning and Farmland students attending classes in the afternoon.



**Monroe Central School  
Before the Tornado April 3, 1974**

In the meantime, Monroe Central students in grades 7-12 used the Farmland elementary building, as well as rooms in the nearby United Methodist and Christian churches. Conditions were crowded to the point that the gymnasium was partitioned into four classrooms with the use of filing cabinets and portable bulletin boards.

By the fall of 1974, a Federal Disaster Grant provided funds to purchase fifteen relocatable classrooms. The opening of school was delayed for a couple of weeks while the installation of these buildings was completed. Parker elementary students attended the Parker school; Farmland elementary students and corporation junior high students were housed in the portable units; and grades 9-12 used the Farmland elementary building.

The new high school facility, built on the same site as the old high school, was first occupied in April of 1978, four years to the month after the first MCHS was demolished by the tornado. The Farmland and Parker buildings continued to be used as elementary schools until 1983 when they were combined into a new facility just west of the high school.



**Monroe Central Jr. Sr. High School  
Present Day**

The junior-senior high school building has been expanded to include the new Millennium Wing that contains several new classrooms and a large meeting room. There is also a new auxiliary gym that continues to meet the needs of the athletic programs. The gym is named for Mr. Larry K. Hall, a retired teacher and former principal at Monroe Central.



In 2023, the new Cub Academy Preschool was launched offering a variety of pre-k options ranging from an accelerated full day preschool experience to a half day pre-k readiness room. The preschool is a fully inclusive program with half day programs for children 3-5 years old up to a full day, rigorous program designed to get children prepared for kindergarten.

## **Lilly Endowment Community Scholarship**

The Lilly Endowment Community Scholarship Program is designed to help raise the level of educational attainment in Indiana, increase awareness of the beneficial roles Indiana community foundations can play in their communities and encourage efforts of Lilly Endowment Community Scholars to engage with each other and with state leaders to improve quality of life in Indiana.

In nominating Randolph County's Lilly Endowment Community Scholar, applicants are scored on academic ability, extracurricular activities, work/community effort, honors and awards, and goals and aspirations. Five finalists are invited to interview with the CFRC's committee, where they are scored on professional demeanor, presentation skills, and quality of response. Nominees are then submitted to Independent Colleges of Indiana (ICI) for the selection of scholarship recipients.

The Lilly Endowment Community Scholarship provides for full tuition, required fees and a special allocation of up to \$900 per year for required books and required equipment for four years of undergraduate study on a full-time basis leading to a baccalaureate degree at any eligible Indiana public or private nonprofit college or university.

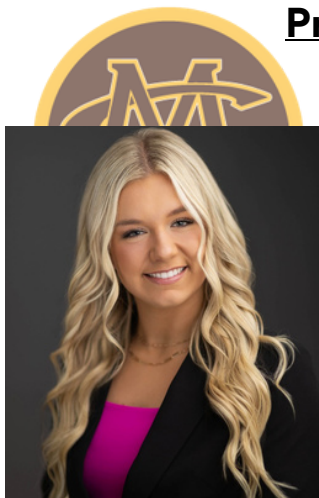
### **2026 Lilly Semi-Finalists**



Top row, left to right: Makennah Chamness, Addilynn Grove, Hadley Hendrickson, Carter Campbell, Aiden Mendenhall

Bottom row, left to right: Campbell Kerns, Avery Thomas, Madelyn Hines, Noah Allen, Jayson Connor

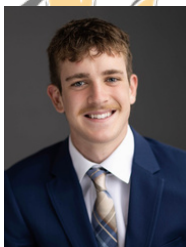
# Lilly Endowment Community Scholarship Program Recipient



**Hadley Hendrickson**

Congratulations to Hadley Hendrickson on being named the 2026 Lilly Scholar! Hadley Hendrickson is the daughter of Daniel Hendrickson and Telynda Hendrickson, and a graduate from Monroe Central Junior/Senior Highschool. In the fall she plans on attending Purdue University to study pre-veterinary medicine.

## Lilly Finalists



**Carter Campbell**



**Madelyn Hines**



**Campbell Kerns**



**Avery Thomas**

The four finalists not selected to receive the Lilly Endowment Community Scholarship will receive \$1,250 scholarships from the Community Foundation.

## Frances I. Woods Scholarship



Frances Woods was born in Farmland, Indiana, on March 21, 1926. She graduated from Lincoln High School and attended Sinclair College, Ball State University, and IU East. Frances retired from Union Trust Bank after 25 years of service. She also worked in real estate for several years and helped manage and work on the family farm. Frances was a charter member of Ad-a-Link Club, a group of graduates from Lincoln High School. She attended Peaceful Valley Friends Church in Lynn and was a member of the Peaceful Valley Ladies Aid.

Scholarship recipient must have demonstrated good character and citizenship, participated in extracurricular activities or community activities, and graduated with a 3.5 GPA or higher.

This scholarship is renewable for four years as long as the student is enrolled as a full-time student pursuing a bachelor's degree at an accredited institution of higher education, and student meets GPA requirements.

### **THERE ARE MORE SCHOLARSHIPS TO LEARN ABOUT!**

We're honored that we have the ability to share amazing stories and highlight the generosity of our community. What you see in this booklet are the scholarships being awarded at Monroe Central Jr./Sr. High School, but there are many more.



To learn about all of the scholarships that are held by the Community Foundation of Randolph County, visit our Master Scholarship List Booklet by scanning the QR code!

## **Kellie Stephen & Dave Furby Memorial Scholarship**



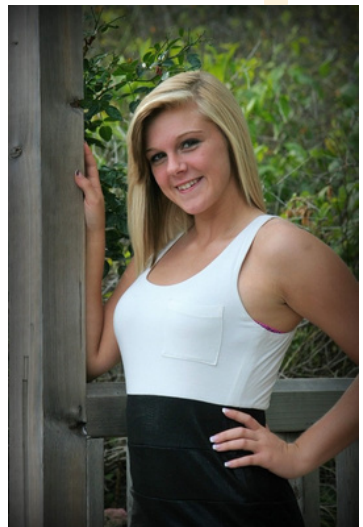
In 2010, Dave Furby established a scholarship fund in memory of his good friend, Kellie Stephen. Kellie Stephen was a 1967 graduate of Winchester Community High School. He was an educator who taught at Union High School and served as an administrator for Winchester Community High School, Driver Middle School, Monroe Central High School, and New Castle Middle School. Kellie was a people person. He was the kind of person with whom you

wanted to spend time. Sadly, Mr. Furby passed in 2017. Dave Furby was a 1969 graduate of Winchester Community High School where he played football and golf. He worked as an Independent Distributor for Little Debbie Cakes for 34 years. He was a member of Phi Delta Kappa, Winchester Moose, and the Winchester Golf Club. The scholarship is now known as the “Kellie Stephen & Dave Furby Memorial Scholarship.” One student at each county high school will receive an award. In honor of the lives of Kellie Stephen and Dave Furby, priority is given to candidates known to give their personal best in everything they do. They are friendly, outgoing, and heavily involved in their school and community.

## **Amber Morrow Memorial Scholarship**

Amber Morrow of Selma, a Monroe Central High School student, dedicated herself to cheerleading, along with many other activities. She found joy in moments shared with family and friends, especially her sister, Emily. Amber’s love for children was evident; she served as a Sunday school helper and pursued her passion for early childhood development at the Muncie Area Career Center.

This scholarship is awarded to a Monroe Central graduate planning to major in either education or in a medical field, then preference given to a student who participated in cheerleading.



## **Ralph W. Stuck, Jr. Memorial Scholarship**

Awarded to a senior boy/girl graduate of Monroe Central High School. Must meet the following requirements: academic achievement, leadership, ability, probable success in her/his selected field, and possible need. Student must rank in the upper half of her/his class. Student must have applied for admission and accepted to an accredited Indiana college or university. Student shall have been enrolled in the Monroe Central High School during her/his eleventh and twelfth years. First preference given to student who plans to study agriculture or natural resources. If no applicants with such plans who are otherwise well qualified, applicants planning to major in other areas will be considered.

## **Inspiring Randolph County - Jammie Michael Scholarship**

“The idea of this scholarship came when I started researching possible scholarship opportunities for my son Reece. He was a Junior at the time and the thought of planning and paying for college felt overwhelming. I reflected on the time Reece spent in school and was reminded of all the hours spent studying, the tears, fights, and late nights. Reece worked so hard and, over time, achieved great things. It became my goal to make sure every student knows we, as a community, believe in them and their dreams and they too, can achieve big things. Every student needs to know that rewards come to those that have qualities like perseverance, grit, determination and the power to rise above challenges. I’m inspired every day by the kids that put in the work.



My family and the community supported this goal of mine and made this scholarship possible for our kids. The Inspiring Randolph County Jammie Michael Scholarship Fund honors one Randolph County graduate with \$1,000 to be paid to a post-high school education of their choice.” – Jammie Michael

## **WE NEED YOUR HELP!**

As we continue to work on and improve this scholarship booklet each year, we will continue to search for photos and information about the individuals whom we have scholarships in memory and/or honor of. If you have any information or pictures of any of these individuals, specifically those we do not have pictures of or much information on, please contact us! We would be thrilled to talk to you, and learn more!

Please contact CFRC's Scholarships & Community Development Officer, Grant Cox with any information you may have!

- [gcox@randolphcountyfoundation.org](mailto:gcox@randolphcountyfoundation.org)
- (765) 584 9077 ext. 201

## **Donald Forrest Hahn & Wilma Fraley Hahn** **Memorial Scholarship**

Donald Forrest Hahn and Wilma (Fraley) Hahn graduated in 1941 in Hollandsburg, Ohio. Don enrolled at Earlham College, but was drafted into the Army to serve in World War II. He was part of the 3rd Army under the command of General Patton and his unit fought at Normandy Beach on D-Day, in the Battle of the Bulge, and in the battle for the Remagen Bridge. Don received a Silver Star, two Bronze Stars, one with clusters and a purple heart for shrapnel wounds. Don was a member of the Honor Guard for General Patton's funeral. Wilma obtained her nursing degree from Reid Memorial Hospital.



When Don returned from the war in 1946, they married and moved to 298 No. Jackson Street in Winchester where they lived as man and wife for 70 years in that same house. Don passed away on December 24, 2016, and just 30 hours later Wilma died on December 25. Wilma worked as an emergency room nurse from 1946-1949 and then was employed by the Randolph County Hospital from 1950-1968. From 1968 until her retirement in 1986 Wilma was Randolph Central School Corporation's nurse. Don farmed, was a rural route mail carrier, a member of the Lion's Club and served on the school board for the Randolph Central School Corporation. He was on the board when the new high school was built. Don and Wilma were members of the First United Methodist Church of Winchester for 70 years. Both Don and Wilma were awarded Sagamores of the Wabash. They had three children: Greg, Randy and LeighAnne. Both Don and Wilma valued public school education and held higher education as a priority.

Awarded to a Randolph County, Indiana, High School graduate with financial need. Preference to be given to a student(s) pursuing a degree in Agriculture or Nursing.

## **Winchester Athena Club Student Scholarship**

The Athena Club was founded in 1982 as an organization where women in local businesses and professions could meet to network with one another and to learn more about the greater Winchester community. The weekly luncheon meetings were open to all working and retired women. Named for the Greek goddess of knowledge and wisdom, the club's purpose was to gain knowledge from the weekly speakers, to promote the role of women as leaders in our community, and to contribute to the knowledge of others by giving of themselves so that others might learn. The club has provided leadership to a variety of community organizations and has given financial support to young people who wished to take advantage of educational opportunities. The Athena Club scholarship is awarded each year to a senior from one of the five Randolph County high schools. The club disbanded in 2022, but the scholarship continues to support the club's focus on education and leadership.

# TRIPLE YOUR IMPACT

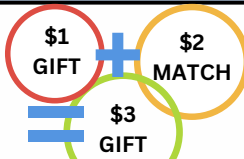
**Your gift to any unrestricted fund will be matched \$2 to \$1 through Lilly Endowment's GIFT IX matching grant program.**

Have you ever wanted your donation to the Community Foundation of Randolph County to do more? Well, now it can! Thanks to a commitment from the Lilly Endowment, Inc., every \$1 you give to the Community Foundation Enrichment Fund (or one of our other unrestricted funds) will be matched with \$2 more, tripling your impact to \$3 while matching funds last.

Now is also a great time to establish a new unrestricted fund since all contributions to it will be matched!



**GIVE YOUR GIFT  
AND SUPPORT YOUR  
COMMUNITY**



**YOUR  
UNRESTRICTED  
DONATION IS  
MATCHED 2 TO 1**



**YOUR GIFT WILL  
IMPACT RANDOLPH  
COUNTY FOREVER**

## What is an unrestricted fund?

Unrestricted funds are established to provide support for urgent needs, invest in local ideas, and support nonprofit organizations. These funds provide the most flexibility to meet the changing needs of the community.

They support our community grant cycles. Nonprofit organizations apply for funding of projects or programs during these cycles, and unrestricted funds support these grants.



Scan a QR  
Code to  
donate!



# JOEL & JANE FLESHER FAMILY ENDOWMENT FUND\*

"Randolph County is a special place to our family. Both Joel and I grew up and have lived here all our lives. I was raised on a farm just east of Lynn and went to Randolph Southern. My parents, Ralph and Burnita Johnting also called Randolph County their home and were very involved in the community. Joel grew up in the northwestern part of Randolph County, north of Parker City and attended Monroe Central. His parents were Tom and Betty Flesher. Tom was a well-known realtor and auctioneer and knew almost everyone around Randolph County.



Randolph County is also home to our three children; Jenna, Jerrett, and Jentry. I taught school for over thirty years at Randolph Central and have made many life-long friends here.

My point being for telling you all of this is that Randolph County is our home, and we hold a special place in our hearts for this county and its people. We want to see it thrive and be the best it can be, not only now, but in the future.

Before I served on the Board of Directors of the Community Foundation of Randolph County, I did not know much about the Foundation. As I learned more about the different types of funds and all the non-profit organizations the Foundation supports, Joel and I decided to begin an unrestricted fund in our family's name. It has been amazing how the fund has grown due to pooling money from all the funds and investing the total. Also, adding to the fund during the Lilly 2:1 matches is a great way to build up your fund quickly. A percentage of the money in our fund is used to provide needs of local non-profit organizations. The CFRC grant committee does a great job of matching the donors' funds to non-profits that are important to the donors or have played a role in their lives.

Randolph County is also home to our grandchildren, and we want to instill in them the importance of giving back to the community where they live and always strive to make it better. Having this fund is an excellent way to give back, and the money in our fund will continue to do good things for many generations to come." - Jane Flesher

\* *The Joel & Jane Flesher Family Endowment Fund is an unrestricted fund. It is the only fund in this booklet eligible for the \$2 to \$1 match.*

## **Terry Swindell Memorial Scholarship**

Terry Swindell, of Winchester, Indiana, lived a vibrant life. He was a lover of animals, an avid golfer, a gifted conversationalist, a friend to many, and a strong supporter of education and young athletes.

Terry grew up in Carlos, Indiana, and graduated from Lynn High School in 1964. He received his bachelor's degree from Black Hills State University, South Dakota, where he was recruited to play basketball on scholarship. He continued his studies at Ball State University receiving his master's degree in education. He began his teaching career at Monroe Central Jr./Sr. High School in 1969. Retiring from the classroom in 2013, his roles included teaching economics and government, serving as administrative assistant, as well as the athletic director from 1989 to 2001.

During his teaching career, he met and married the love of his life, Peggy (Lewis) Swindell. They enjoyed reading, vacationing at Lake Cumberland, and supporting nieces and nephews in their athletic endeavors. To qualify for this scholarship, students must be a graduate from Monroe Central Jr./Sr. High School, and have participated in high school sports either as an athlete or sports/team manager.



## **Karen Hardwick Memorial Scholarship**

Karen Hardwick, a graduate of Monroe Central High School, worked at the school for many years, teaching responsibility, honesty, and work ethic. She was involved in the community, active in the Parker City United Methodist Church, served on the Church Council, and assisted with VBS and Youth Group. She was also dedicated to service, spending many hours alongside the friends she made serving.



This scholarship is open to students graduating from Monroe Central High School. Applicants must write an essay about character as modeled by Karen Hardwick. *Awarded as funds are available.*

## From Revolution to National Pride



The Community Foundation, in partnership with The Winchester Foundation and Randolph County United, is proud to support the *From Revolution to National Pride* countywide concert in celebration of our nation's Semiquincentennial. We extend a special thank you to Max Jones for his tireless efforts to coordinate this successful performance. The opportunity to partner with the Purdue University Wind Ensemble and all five Randolph County high school bands is likely a once-in-a-lifetime occurrence and we are so grateful for everyone's participation.



## Tom and Betty Herold Scholarship



This scholarship is made possible by the generosity of Thomas and Elizabeth Herold.

The Herold Scholarship is awarded to graduates of a Randolph County, Indiana, high school. The scholarship is awarded annually to one of the high schools on a rotational basis in the following order (or in the school consolidated), and then repeated: Randolph Central School Corporation (Winchester Community High School), Randolph Eastern School Corporation (Union City Jr./Sr. High School), Randolph Southern School Corporation, Monroe Central Jr./Sr. High School, Union School Corporation. Students must be pursuing a two- or four-year secondary degree.



# COMMUNITY FOUNDATION of RANDOLPH COUNTY

BRINGING PEOPLE & RESOURCES TOGETHER



120 W. Washington St. | Winchester, IN 47394



765.584.9077



765.584.7710



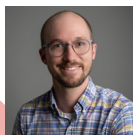
[randolphcountyfoundation.org](http://randolphcountyfoundation.org)



[facebook.com/RandolphCountyFoundation](https://facebook.com/RandolphCountyFoundation)



Lisa Jennings  
Executive Director  
765-584-9077 x203  
[ljennings@randolphcountyfoundation.org](mailto:ljennings@randolphcountyfoundation.org)



Grant Cox  
Scholarships & Community Development Officer  
765-584-9077 x201  
[gcox@randolphcountyfoundation.org](mailto:gcox@randolphcountyfoundation.org)

## Interested in establishing a fund?

### Meet with the Foundation staff

Knowledge is power. Arrange a meeting with the Community Foundation of Randolph County staff to discuss your charitable wishes. The staff will explain the services the CFRC can provide you and how the CFRC can meet your needs. The CFRC will take your wishes and work with you to create a fund agreement.

### Review the agreement

The CFRC will provide you with a custom fund agreement. It will include the name of your fund, the purpose of your fund, the distribution of your fund, any special request of your fund and all the general CFRC information. The CFRC will have the agreement reviewed by legal counsel, but it will be your responsibility as the donor to make sure that your information is correct. When you review the document, make sure that your name is spelled correctly, the name of the fund is correct, the purpose is correct and that any other special arrangements are detailed to your desires. The CFRC will work in your best interest, but we are not financial advisors. We strongly encourage you to take your agreement to an accountant, attorney or other trusted financial advisor to review. They will be looking for your best interest and may suggest something that will enhance your charitable wishes or tax advantages.

### Make it official

After you have reviewed and approved the agreement, the Board of Directors will be notified at a meeting of your intent to establish a fund. The Board will vote to approve the fund. Upon approval, you and the Board president will sign the agreement. You will then make your donation and your fund will become part of the permanent endowment. The staff will keep in contact with you when distributions are made from your gift.