



COMMUNITY FOUNDATION of RANDOLPH COUNTY

BRINGING PEOPLE & RESOURCES TOGETHER

ANNUAL REPORT



2016 - 2017

Table of Contents

Table of Contents	1	2016 Lilly Scholarship	13
Board of Directors	2	2017 Lilly Scholarship	14
Letter From Executive Director	3	2016 Scholarships	15
Charitable Interests	4	2017 Scholarships	16
Heroes	5-6	2016 Donors	17-18
2016 Community Project Grantees.	7	2017 Donors	19-21
2016 Spring Grants	8	Fund Types.	22
2016 Fall Grants	9	Funds	23-24
2017 Spring & Fall Grants	10	Statements of Financial Position	25
2016 IAC Grants	11	Statement of Activities	26
2017 IAC Grants	12		

What Is A Community Foundation?



A community foundation is a publicly supported organization created by and for local citizens to benefit their community. Community foundations pool gifts, both large and small, to meet local needs, build the community’s capacity to help itself, and improve the quality of life for all the community’s residents.

Because community foundations know and understand local needs, they are especially suited to educate and help people with their charitable contributions through personalized service and local expertise. Donors gain access to the community foundation’s professional staff to learn about community needs and to identify innovative and effective community projects. These characteristics make community foundations ideal for

administering philanthropic funds. Donors can create funds now or in the future in their will through their estate planning.

This report was designed by Amy Weimer and Aaron Wallace, Summer Intern



Board of Directors

2016 Board Officers

President



Christen Commers Smith
Board Member 2017

Vice President



Linda Wilcox

Secretary



Cheryl Jones

Treasurer



Kurt Prescott

2017 Board Officers

President



Linda Wilcox

Vice President



Robert (Bob) Gentry

Secretary



Jane Flesher
Board Member 2016

Treasurer



Kurt Prescott

2016 & 2017 Board Members



Melvin Barnell



Louise Hart



Joyce Husmann



Chip Loney



Jim Meinerding



Cathy Stephen Miller



Suzan Dillon Myers



Janice Powers



Ronn Shumaker (2016)



Jeremy Stephan (2017)

Staff



Lisa Jennings
Executive Director



Stephanie Ward
Program Director



Amy Weimer
Office Coordinator



Letter from Executive Director



It Takes a Village, but Not a Fortune

When Warren Buffet made his lifetime gift of over \$30 billion to the Bill and Melinda Gates Foundation, the size and generosity of the gift attracted worldwide attention. Fortunately for those with an interest in philanthropy, it doesn't take billions of dollars to make a difference.

Most of us, given the chance, want to leave a lasting reminder of the gratitude we feel for the places and institutions we love and support. It is a privilege to make a difference—to show, in some way, that we have contributed to important work or played a part in a cause that benefits society for generations to come.

We can all give back, but in years past, only the wealthiest were able create large and lasting legacies. Today, though, thanks to widely held wealth and tax-favored giving opportunities at the Community Foundation of Randolph County, many more of us can participate in this calling and experience the joy and satisfaction that come from making a difference.

In addition to personal satisfaction, donors are often rewarded with financial and estate planning benefits. With careful planning, donors find they are able to:

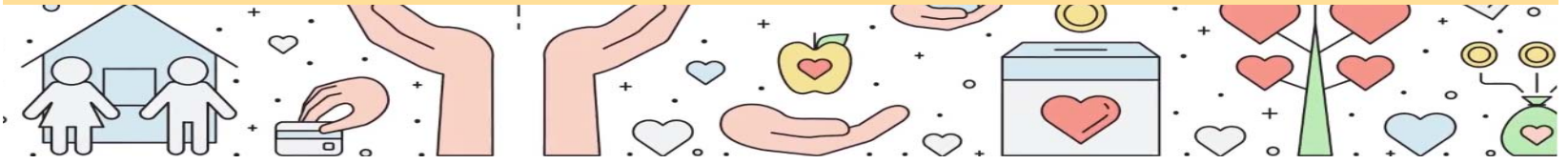
- Make a personal statement
- Save taxes (and as a result, perhaps give a larger gift than would otherwise be possible)
- Help shape the future and leave a lasting legacy

There are many planned gift opportunities available. As you consider ways to support our mission, let us help you find rewarding planning strategies with unique combinations of tax savings and personal satisfaction.

Lisa



Ways to Give



Your Charitable Interests are SUPPORTED FOREVER!

BEQUESTS

One of the most popular and simplest ways to give, a bequest allows you to create a legacy without taking cash out of your pocket during your lifetime. If you are considering a bequest, let us explain the many options you have and how we will ensure that your gift is used as you intend.

BENEFICIARY DESIGNATIONS

You can also name the Foundation as a beneficiary of your retirement plan or life insurance policy. This is generally a simple process that can easily be modified at any time to meet your changing needs. Moreover, using retirement assets to fund your charitable interests is often a tax wise strategy.

IRA CHARITABLE ROLLOVER

If you are 70 ½ or over and own an IRA, you can make a gift using a direct transfer of funds from an IRA to us. Transferred amounts count toward the required minimum distribution, but no tax is due on the distribution (up to \$1000,000 annually). At any time during the year, you simply notify your IRA custodian to make a direct transfer of the required distribution amount from the IRA to us.

GIFTS OF MARKETABLE SECURITIES

A gift of appreciated stock (held for more than one year) can play an important role in financial and philanthropic planning. Under the right circumstances, giving appreciated stock can allow you to make a significant contribution without affecting cash flow. Gifts of securities can be made quickly and easily, and the tax benefits affecting both income and capital gains dramatically increase the impact of these gifts. A gift of appreciated stock also allows a deduction for the full fair market value, even if the stock was purchased for substantially less. In a sale, such a gain would incur the capital gains tax, but gifting the stock avoids that tax, no matter the amount of the appreciation. Congress provided these important tax rewards to encourage charitable gifts of appreciated property.

ENDOWED FUNDS

If you would like to create a lasting legacy, consider a named, endowed fund. Establishing an endowed fund offers ongoing support for the charity of your choice and provides you with valuable tax benefits. Endowed funds may also be created in honor or memory of a loved one to ensure they are remembered forever.

ANONYMOUS DONATIONS

Perhaps you are a very private person who wants to support the community but does not want everyone else to know. Gifts made anonymously to the Foundation ensure your privacy as well as your charitable intent.

GIFTS OF CASH

Cash is the simplest and most popular way to make a gift. Cash is immediately available to support our programs, and every dollar you give is deductible in the year you make the gift if you itemize.



Heroes

The Community Foundation of Randolph County has a special fund to honor those individuals, groups, businesses, and organizations who have contributed to the quality of life in this county. This can be a posthumous honor or one that highlights the work of a living individual or organization. Do you know a Hero you would like to nominate?



Ruth Mills



Ted Leahey



Bettye Monks



Gerald & Patsy Stephen



Jim & Linda Noffsinger



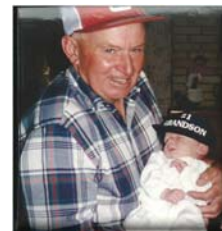
Harmon & Mable Shafer



Dr. Conrad Miranda III



Winchester Lions Club



Ralph Johnting Jr.



MC Elementary



Randolph Eastern



Randolph Southern



MC Jr-Sr High



Randolph Central



Brits' Wonderful Learners



GRIC



Randolph County Educators



Heroes Continued



Gene & Roberta Bennett



City Employees of Union city



Dale & Velma Conklin



Leonard Fisher



Betty Thornburg, RN



Cindy Winkle

Nominate a Hero!

Email information below to aweimer@randolphcountyfoundation.org or mail information to our office, attention to Amy at 120 W. Washington St. | Winchester IN 47394

Your gift will go into the Randolph County Heroes Fund of the Community Foundation. Grants awarded from the Randolph County Heroes Fund help to increase the quality of life in Randolph County. Thank You!

- ◆ Name & Address of Nominee
- ◆ Your Name & Address, Phone Number, and Email Address
- ◆ Amount of Donation (Minimum of \$1,000)
- ◆ Do you want this to be anonymous YES or NO
- ◆ Provide a few details explaining why you are nominating the individual, business or organization, and provide a picture



2016 Community Project Grantees

In 2014, the Foundation entered into a grant agreement with Lilly Endowment as part of its GIFT Phase VI initiative and was awarded \$500,000. This grant was used to match donations from August 1, 2014, through March 31, 2016. Gifts to the Foundation's Community Enrichment Fund were matched \$1 for \$1, gifts to any restricted endowed fund were matched \$0.50 for \$1, and gifts to a community project nonprofit organization were matched \$0.50 for \$1. The following organizations were selected as Community Project Grantees and raised thousands of dollars that were eligible for the matching program.



The total grant to the **Friends of Ward Township District School #5** was \$36,399.44, which was used for building restoration.

The total grant to the **Randolph County YMCA** was \$150,000, which was used for a new wellness center.

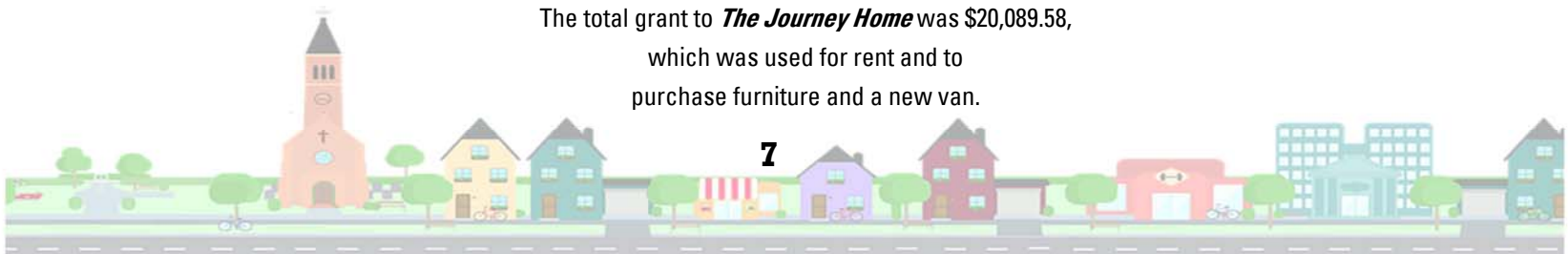


The total grant to the **Winchester Band Aides** was \$58,194, which was used to purchase 110 new uniforms.

The total grant to **The Shalom Center** was \$39,501, which was used to purchase a walk-in freezer.



The total grant to **The Journey Home** was \$20,089.58, which was used for rent and to purchase furniture and a new van.



2016 Spring Grants

The Community Foundation of Randolph County's mission to bring people and resources together is reflected in how the organization operates—the gifts of individuals, groups, and businesses are all invested for the purpose of providing grants for the benefit of the county. These grants may be scholarships for deserving students or grants to a non-profit organization serving to improve the lives of Randolph County residents. Twice per year, the Foundation accepts grant requests for the funding of projects and organizations. A committee consisting of Foundation board members and community advisors reviews the requests and determines which grants will be funded and the level of funding. When making the decisions, the committee considers the quality of the organization, its projects, and its programs, as well as how it affects the residents of the county; the committee strives to fund projects that will have the greatest impact on the county.

The Community Foundation of Randolph County Board of Directors approved and awarded \$59,035 in grants to 15 projects serving Randolph County. \$29,535 was awarded from the Community Foundation Enrichment Fund and \$29,500 was awarded from the Union City Community Fund at the Spring Grant Awards Program on May 17th, 2016. This event, held at The Community Room in Union City, celebrated both donors and organizations receiving grants.

\$4,000 to the Kidz Town Academy - to add daycare to current list of services offered for Randolph County and purchase items to be used in the daycare—\$4,000 from Community Foundation Enrichment Fund

\$1,000 to Randolph County Literacy Coalition—to assist with the purchase of books for Randolph County students—\$500 from Community Foundation Enrichment Fund and \$500 from Union City Community Fund

\$5,000 to Preservation Society of Union City - to assist with the cost of adding a mural to a Union City building in the business district depicting the historic Lambert car. The mural will be created by Pam Bliss—\$5,000 from Union City Community Fund

\$2,500 to Union Literary Institute - to support the stabilization of the Union Literary Institute through granting of funds to match an Indiana Heritage Support Grant—\$1,500 from Community Foundation Enrichment Fund and \$1,000 from Union City Community Fund

\$6,000 to State Line Heritage Days - to assist with entertainment costs for State Line Heritage Days—\$6,000 from Union City Community Fund

\$4,000 to Art Association of Randolph County, Inc. - to add equipment for the Arts Depot and supplies and artist instruction for children's events—\$2,000 from Community Foundation Enrichment Fund and \$2,000 from Union City Community Fund

\$4,840 to Randolph County Youth Leadership - to purchase military style cots to be used for campers and for Randolph County emergencies if needed—\$3,480 from Community Foundation Enrichment Fund and \$1,000 from Union City Community Fund

\$1,300 to Randolph County Economic Development - to support a leadership program for Randolph County girls—\$800 from Community Foundation Enrichment Fund and \$500 from Union City Community Fund

\$10,000 to Second Harvest Food Bank of East Central Indiana - to support Randolph County's first School Pantry Program to be located at North Side Elementary School in Union City—\$5,000 from Community Foundation Enrichment Fund and \$5,000 from Union City Community Fund

\$2,030 to Youth Service Bureau of Jay County - to support classroom needs for the BASE program in Randolph County—\$1,030 from Community Foundation Enrichment Fund and \$1,000 from Union City Community Fund

\$1,000 to Darke County United Way - to provide books through Dolly Parton Imagination Library free to 40 children ages 5 and under in Union City, Ohio—\$1,000 from Union City Community Fund

\$3,000 to Randolph County Historical Society - to upgrade the museum's technology—\$3,000 from Community Foundation Enrichment Fund \$9,000 to Union City Redefined for UC Arts Festival—to support the Union City Arts Festival—\$3,000 from Community Foundation Enrichment Fund and \$6,000 from Union City Community Fund

\$2,500 to Monroe Central Athletic League - to replace and/or repair bleacher on the North diamonds—\$2,500 from Community Foundation Enrichment Fund

\$3,225 to State of the Heart Care - to assist with the start up costs for a Palliative Care Clinic at St. Vincent Randolph Hospital—\$2,725 from Community Foundation Enrichment Fund and \$500 from Union City Community Fund

\$9,000 to UC Redefined for The Arts Festival—\$3,000 from Community Foundation Enrichment Fund and \$6,000 from the Union City Community Fund



2016 Fall Grants

The Community Foundation's Board of Directors approved and awarded \$43,500 in grants to 12 projects serving Randolph County. \$22,000 was awarded from the Community Enrichment Fund, \$16,500 was awarded from the Union City Community Fund, and \$5,000 was awarded from the Goodrich Bandshell Fund.

The grants awarded are as follows:



- **\$7,500 City of Winchester Park Board** - To create a summer concert series held at the Goodrich Park amphitheater that will be free to the public. (\$2,500 awarded from the Community Enrichment Fund and \$5,000 awarded from the Goodrich Bandshell Fund)
- **\$5,000 Community and Family Services, Inc.** - To purchase sets of Develop, Inspire, Grow Curriculum for the Head Start locations. (\$1,800 awarded from the Community Enrichment Fund and \$3,200 awarded from the Union City Community Fund)
- **\$500 Down Syndrome Indiana, Inc.** - To fund a one-time New Parent Packet for parents of children with Down Syndrome. (Awarded from the Community Enrichment Fund)
- **\$2,000 Farmland Friends Food Pantry** - To assist with the purchase of a backup generator. (Awarded from the Community Enrichment Fund)
- **\$2,500 Friends of Ward Township District School #5** - To assist with exterior brick restoration. (Awarded from the Community Enrichment Fund)
- **\$5,000 Historic Farmland USA** - To assist with the renovation and upgrade of the Farmland Community Center and the purchase of a new HVAC system, flooring, and dropped ceiling. (Awarded from the Community Enrichment Fund)
- **\$3,300 Jay-Randolph Developmental Services, Inc.** - To assist with acquiring materials and equipment to enhance teaching of basic skills. (\$2,000 awarded from the Community Enrichment Fund and \$1,300 awarded from the Union City Community Fund)
- **\$2,700 PAWS Animal Rescue and Shelter** - To purchase another dog run to allow more dogs to run at one time, to purchase covers for the run and kennels, and to install an outdoor water source. (Awarded from the Union City Community Fund)
- **\$5,100 Randolph County YMCA, Inc.** - To purchase supplies and to support other program expenditures for the pregnancy prevention and substance abuse prevention programs. (\$2,600 awarded from the Community Enrichment Fund and \$2,500 awarded from the Union City Community Fund)
- **\$2,000 Salvation Army Randolph County Extension Unit** - To support the Emergency Assistance Program for local residents who experience unforeseen financial hardships. (\$1,000 awarded from the Community Enrichment Fund and \$1,000 awarded from the Union City Community Fund)
- **\$2,900 Unchained Praises** - To create resource packets for heroin addicts and their families and to train people to be Community Health Workers/Certified Recovery Specialists. (\$2,100 awarded from the Community Enrichment Fund and \$800 awarded from the Union City Community Fund)
- **\$5,000 Union City Chamber of Commerce** - To purchase gift certificates that will be given to new citizens and babies to introduce them to community businesses. (Awarded from the Union City Community Fund)



2017 Grants

SPRING 2017 GRANTS

Arts & Culture

\$5,300 Art Association of Randolph County, Inc. - Funding for the restoration and framing of artwork as well as for activities taking place during the Arts Festival, such as a jazz concert, artist demonstrations, workshops, and children's activities.

\$6,000 State Line Heritage Days - to provide entertainment at State Line Heritage Days Festival.

\$1,000 Union City Redefined for Union City Arts Festival - funding for the Union City Arts Festival

Civic & Community Development

\$4,000 Preservation Society of Union City IN-OH Inc. - funding for cosmetic improvements in window displays, repair interior flooring, general renewal in appearance of the mall, band, food, and prize give-a-ways in preparation for the 25th Summer Anniversary Celebration.

\$1,200 Winchester Downtown Charitable Association DBA Winchester Main Street - to purchase flags with bases to help draw attention to the weekly Farmers Market located on the west side of the square.

Education

\$1,000 Randolph County Literacy Coalition - to purchase books to gift to elementary students in Randolph County Schools for the purpose of developing literacy skills, and creating a love for reading

Health & Human Services

\$1,420 Union City Community Help Center - to purchase freezer and utility basket trucks for the food pantry.

Fall 2017 Grants

Arts & Culture

\$2,250 Winchester Bicentennial Committee - funding to hire a headlining act & opening act for a Christian Music Concert at Goodrich Park.

Civic & Community Development

\$1,383 Cardinal Greenways - funding to purchase & install a Dero Fixit repair stand at the Losantville trail head, which will allow bicyclists to complete basic maintenance & repairs to the bicycles while using the trail.

\$2,700 PAWS Animal Rescue & Shelter - funding to purchase & plant trees for wind block protection and shade.

\$7,000 Union City Redefined-Fiscal Agent for Midwest TV - funding to replace outdated equipment, such as cameras, live-stream box, microphones, and studio lights.

Education

\$1,235 Youth Service Bureau - finding needed for the B.A.S.E. Program for high risk students in Randolph County. Items needed include clothing and personal hygiene items as well as games.

Health & Human Services

\$2,882 Jay-Randolph Developmental Services, Inc. - funding to replace chairs in the Day Services & Prevocational Service Area, and for purchase of two (2) AED'S, and four (4) computer tablets.

\$5,000 Second Harvest Food Bank of ECF - funding to expand the School Pantry Program to include Baker Elementary, Deerfield Elementary, and Willard Elementary in addition to Union City.

\$1,500 Unchained Praises - funding for updating and printing resource packets for heroin addicts and their families.

Historical Preservation

\$1,000 Friends of Ward Township District No. 5 School - funding to restore the interior of the District No. 5 School in Ward Township. Specifically, paint, stain, and insulation.

Youth

\$5,000 Randolph County YMCA - funding to purchase supplies & support a portion of other program expenditures for the Pregnancy Prevention Program and CHASE Substance Abuse Prevention Program.



2016 IAC Grants

The following organizations were awarded grants in 2016 for the 2017 fiscal year:



AOS I (Organizations with budgets over \$50,000)

- \$7,455 to Marion Community School of the Arts | Grant County
- \$7,455 to Marion Philharmonic Association | Grant County
- \$5,585 to Art Association of Henry County | Henry County
- \$6,520 to Anderson Young Ballet Theatre, Inc. | Madison County
- \$5,585 to Art Association of Randolph County | Randolph County

Arts Project Support

- \$3,498 to East Central Indiana Chamber Orchestra | Delaware County
- \$4,372 to Earlham College for the Chanticleer String Quartet | Wayne County
- \$4,372 to Minnetrista Cultural Foundation | Delaware County
- \$1,836 to Muncie Children's Museum, Inc. | Delaware County
- \$4,372 to Youth Symphony Orchestras of East Central Indiana | Delaware County
- \$4,372 to Hoosier Shakes, Inc. | Grant County
- \$4,372 to Beautify Knightstown, Inc. | Henry County
- \$2,843 to National Center for Great Lakes Native American Culture, Inc. | Jay County
- \$4,372 to Central Indiana Powwow, Inc. | Madison County
- \$4,372 to Masterworks Chorale, Inc. | Delaware County
- \$4,372 to Richmond Shakespeare Festival, Inc. | Wayne County
- \$4,372 to Richmond Symphony Orchestra (City Life) | Wayne County



2017 IAC Grants

The following organizations were awarded grants in 2017 for the 2018 fiscal year:



**INDIANA ARTS
COMMISSION**
MAKING THE ARTS HAPPEN

Arts Organization Support II (Budgets of \$250,000 or more)

- **\$9,783** Muncie Civic Theatre Association | Delaware County
- **\$12,700** Cornerstone Center for the Arts | Delaware County
- **\$12,700** Arts Places, Inc. | Jay County
- **\$9,783** Richmond Symphony Orchestra | Wayne County
- **\$9,783** Anderson Symphony Orchestra Association, Inc. | Madison County
- **\$9,783** Richmond Art Museum | Wayne County
- **\$9,783** Muncie Civic & College Symphony Association, Inc. | Delaware County
- **\$9,783** Anderson Fine Arts Foundation, Inc. | Madison County
- **\$7,838** Richmond Civic Theatre | Wayne County

Arts Organization Support I (Budgets of \$250,000 or less)

- **\$6,866** Marion Philharmonic Association | Grant County
- **\$6,866** Anderson Young Ballet Theatre, Inc. | Madison County
- **\$7,838** Marion Community School of the Arts | Grant County
- **\$5,893** Art Association of Henry County
- **\$5,491** Youth Symphony Orchestras of East Central Indiana | Delaware County
- **\$5,893** Art Association of Randolph County, Inc. | Randolph County
- **\$5,893** Muncie Arts & Culture Council | Delaware County
- **\$5,893** Anderson's Mainstage Theatre | Madison County



Arts Project Support

- **\$3,100** Muncie Children's Museum, Inc. | Delaware County
- **\$5,000** Hoosier Shakes, Inc. | Marion County
- **\$5,000** Central Indiana Powwow, Inc. | Madison County
- **\$5,000** Richmond Art Museum-Fiscal Agent for Meltdown Winter Ice Festival | Wayne County
- **\$5,000** Richmond Community Schools/Civic Hall Performing Arts Center | Wayne County
- **\$5,000** Masterworks Chorale, Inc. | Delaware County
- **\$5,000** National Center for Great Lakes Native American Culture | Jay County
- **\$5,000** Hagerstown Nettle Creek Players, Inc. | Wayne County
- **\$5,000** Richmond Symphony Orchestra—Fiscal Agent for City Life | Wayne County
- **\$4,000** East Central Indiana Chamber Orchestra | Delaware County
- **\$5,000** Earlham College for the Chanticleer String Quartet | Wayne County
- **\$5,000** Richmond Shakespeare Festival, Inc. | Wayne County
- **\$2,452** Carey Services | Grant County
- **\$5,000** Rush County Community Foundation Fiscal Agent for Heart of Rushville | Rush County



2016 Lilly Scholarship

Each year, the Community Foundation of Randolph County awards the Lilly Endowment Community Scholarship to one deserving senior in the county. Applicants must meet the scholarship criteria, and their applications are scored by the scholarship committee, which narrows the pool to ten Lilly Semi-Finalists. The top five finalists are then interviewed by the committee, and one recipient and two alternates are selected.



Levi Baldrige

Levi Baldrige was first chosen by the scholarship committee, but declined the Lilly Endowment Community Scholarship to follow his dreams to attend West Point Academy. A graduate of WCHS, Levi received a \$2,000 scholarship from the Community Foundation of Randolph County.

LILLY ALTERNATE



Abigail Shores

LILLY SEMI-FINALISTS



Left to Right: Rachel Brumfield, Levi Baldrige, Rebecca Neville, MacKenzie Bales, Abigail Shores, Yogen Solanki, Luke Dotson, Cierra Burford , Morgan Haney, Not pictured Courtney Pearson

Lilly Recipient



MacKenzie Bales

"Being the recipient of the 2016 Lilly Scholarship has always been about so much more than merely the financial assistance. Completing my undergraduate education debt free is a wonderful peace-of-mind and will help exponentially in the future as I continue my education in veterinary school; however, the Lilly scholarship has given me much more. Through the application process I learned how to look at my experiences and put into words how they have impacted my life and made me a strong candidate for future endeavors. The interview taught me how to be confident and professional and not only help me in more recent interviews, but also taught me how to be more assertive and comfortable in conversation with people I meet for the first time. These are just a few ways the Lilly has impacted my life for there are many more. Being a Lilly recipient is an honor I will always cherish. I wish to thank the Community Foundation and Lilly for making this scholarship possible for all past, present and future students in Randolph County."



2017 Lilly Scholarship

Randolph County students with a cumulative GPA of 3.5 or higher were invited to apply for the 2017 Lilly Endowment Community Scholarship. Fifty-one students applied. They were scored on their academic ability, extracurricular activities, community involvement, work history, honors, and awards. Applicants were also scored on essays that they wrote about themselves and on their future goals and aspirations. Five finalists were selected for interviews and Elizabeth Sowinski of Union City was selected to receive the scholarship.

Lilly Recipient

LILLY SEMI-FINALISTS



Left to Right, Hayden Downey, Aaron Wallace, Leah Wren, Austin Lawrence, Landry Zimmers, Kollin Warren, Elizabeth Sowinski, Kyle Reichard, Zoe Robison, Elizabeth Deckard



Elizabeth Sowinski

"The Lilly Scholarship has been one of the greatest blessings in my life. Because of this scholarship, I will be able to graduate from college and enter graduate school completely debt free. Unlike many students, I have not spent countless hours wondering from where the funds to pay for my next semester will come. I have not needed to work multiple jobs just to pay my tuition. Instead, I have been able to focus solely on my school work, financially at peace. This has allowed me to excel in my classes, participate in several clubs and organizations, and even work in a research lab. Because of the Lilly Scholarship, I have been able to fully embrace college in both academic and extracurricular activities and service."

LILLY ALTERNATES



Austin Lawrence



Leah Wren



2016 Scholarships



A scholarship fund is a type of designated fund that provides donors the opportunity to offer financial support to students. When a scholarship fund is established, the donor outlines the criteria to guide the awards. In 2016—2017 the following scholarships were awarded to the following deserving students throughout the county. Each recipient's name and school is listed below the name of the fund.

Adelsperger Family Scholarship

Leslie Dirksen—MVHS
Ellexis Cook—UCCHS

Amber Morrow Memorial Scholarship

Kendra Thornburg—MCHS

Anne & Wayne Hinchman Memorial Scholarship

Emily White—WCHS

Beatrice E. Hughes Scholarship

Luke Dotson—WCHS

Butch Mullen Scholarship

Riley Hendrickson—WCHS

Charles F. Passmore Memorial Scholarship

Riley Hendrickson—WCHS

Chet Mock Memorial Scholarship

Yogen Solanki

Community Enrichment Scholarship

Cierra Burford—MCHS
Morgan Haney—MCHS
Courtney Pearson—UCCHS
Yogen Solanki—UCCHS
Abigail Shores—WCHS
Levi Baldrige—WCHS
Luke Dotson—WCHS
Rachel Brumfield—WCHS
Rebecca Neville—WCHS

D.A.R.E. Randolph County Scholarship

Tristan Huddleston—MCHS
Brendall Schweizer—RSHC
Jennifer Tutterow—UHS
Colin Burke—WCHS

Dellarose Sickels Scholarship

Sydney Livingston—UCCHS

Donnabelle Gaylor Scholarship

Elena North—WCHS

Dorothy Allen Memorial Scholarship

Garrett Alka—RSHS

Dr. David D. Davis & Michael D. Wickersham Scholarship

Zoe Hargrave—WCHS

Dr. Dianna K. Wolfe Memorial Scholarship

Morgan Haney—MCHS

Duane E. & Ruby M. Wickersham Memorial Scholarship

Kali Miller—UCCHS
Abbragale Hawley—WCHS

Elizabeth & Joe Gardner Scholarship

Zoe Hargrave—WCHS

Environmental Education Scholarship

Hagan Lawson—WCHS

Ethan Cheesman Memorial Scholarship

Evan Patterson—UHS

Evelyn Ann Abernathy Memorial Scholarship

Gavin Craig—WCHS

Gary Horner Memorial Scholarship

Rebecca Neville—WCHS

Gene & Roberta Bennett Scholarship

Jessica Elliott—UCCHS

Godfrey-Wasson Scholarship

Elizabeth Casillas—UCCHS

Harry Fuller & Thelma Way Fuller Memorial Scholarship

Tanner Stanley—WCHS

Herold Scholarship

Stephanie Dirksen—JCHS

Inez M. Howe Memorial Scholarship

Ellie Miller—RSHS
Maddelyn Reindl-Greenan—WCHS

Ira & Olive Davisson Scholarship

DeAnn Kauffman—UHS
Hagan Lawson—WCHS

Jack W. & Ione M Carpenter Scholarship

Lindsey McCoy—WCHS

Jason Rickert Memorial Scholarship

Elizabeth Casillas—UCCHS

Jay & Linda Wagner Memorial Scholarship

Mariah Roberts—WCHS

Jay Gower Memorial Scholarship

Joseph Teeter—MVHS

John B. Mallory Memorial Scholarship

Sarah Mallory—WCHS

Judge Charles P. Holdeman Scholarship

Levi Baldrige—WCHS

June Potter Memorial Scholarship

Emily White—WCHS

Kathy Harshman Leverenz Scholarship

Joette Longrick-Sigler—UCCHS

Kellie Stephen Memorial Scholarship

Joshua Randall—MCHS
Molly O'Connor—RSHS
Joette Longrick-Sigler—UCCHS
Dylan Moore—UHS
Mariah Roberts—WCHS

Kevin Gulley Memorial Scholarship

Jalisa Rush—WCHS
Tanner Stanley—WCHS
Titus Edwards—WCHS

Lykins Family Entrepreneurship Scholarship

Justin Fields—UCCHS

Merrett R. Monks Scholarship

Austin Bogue—WCHS

Monroe Central Alumni Assoc. Scholarship

Kendra Thornburg—MCHS
Mackenzie Stahl—MCHS

Myrtle Adelsperger Memorial Scholarship

Amber Curry—UCCHS
Madison Puderbaugh—MVHS

Opal & Murray McGuire Scholarship

Luke Dotson—WCHS

Phillip Hawley Memorial Scholarship

Randy Beer—WCHS

Ralph Stuck Scholarship

Katlynn Steveson—MCHS

Randolph County Board of Realtors

Elliott Waber—WCHS

Richard & Mamie Fields Scholarship

Savanna Hale—WCHS

Robert & Rachel Stump Scholarship

Rachel Brumfield—WCHS

Robert G. Jones Scholarship

Matthew Jackson—WCHS

Robert Litschert Memorial Scholarship

Sarah Mallory—WCHS

Rosemary Shockney Scholarship

Rebecca Neville—WCHS

Russell Symmes Scholarship

Shelby Moreland—WCHS

Ruth Bales Fisch Memorial Scholarship

Michaela Brown—WCHS

Stephen Family Scholarship

Alaina Murali—NCHS
Nikolas Cline—UCCHS
Rachel Brumfield—WCHS

Tammy Hall Scholarship

Kaitlin Cline—WCHS

Union City Class of 1970 Scholarship

Kody Denney—UCCHS

Union City Kiwanis Club Scholarship

Grace Livingston—MVHS

Union Township Alumni Scholarship

Jaylen Evans—UHS

Virginia Davis Crew Weber Scholarship

Chelsea Shewman—WCHS

Wallace & Edna Field Scholarship

Levi Baldrige—WCHS

Walter Shaw Music Scholarship

Sydney Livingston—UCCHS

Wanda Mann Scholarship

Kasey Hummel—MVHS
Leslie Dirksen—MVSH
Ashley Waddups—UCCHS
Sydney Livingston—UCCHS

Winchester Area Chamber of Commerce

Riley Hendrickson—WCHS

Winchester Athena Club Scholarship

Dora Lott—MCHS

Winchester Kiwanis Club Scholarship

Gavin Craig—WCHS
Hagan Lawson—WCHS
Leah Malkey—WCHS
Maddelyn Reindl-Greenan—WCHS

Winchester Order of Eastern Star Scholarship

Kendra Thornburg—MCHS



2017 Scholarships



Adelsperger Family Scholarship

Elaina Stump—MVHS
Hailey Sousa—UCCHS

Amber Morrow Memorial Scholarship

Jocelyn Peckham—MCHS

Anne & Wayne Hinchman Memorial Scholarship

Gavin Bowling—WCHS

Beatrice E. Hughes Scholarship

Austin Lawrence—WCHS

Butch Mullen Scholarship

Adam Hollinger—WCHS

Charles F. Passmore Memorial Scholarship

Elias Gates—WCHS

Community Foundation Enrichment Scholarship

Elizabeth Deckard—RSHS
Zoe Robinson—RSHS
Hayden Downey—UCCHS
Kollin Warren—UCCHS
Kyle Reichard—UCCHS
Landry Zimmers—UCCHS
Aaron Wallace—WCHS
Austin Lawrence—WCHS
Leah Wren—WCHS

D.A.R.E. Randolph County Scholarship

Terry Kuhns—MCHS
Mackyndsea Burke—UHS
Jonathan Pegg—WCHS

Dellarose Sickels Scholarship

Emma Baron—UCCHS

Donnabelle Gaylor Scholarship

Brian Reagan—WCHS

Dorothy Allen Memorial Scholarship

Cameron Whitesel—RSHS

Dr. David D. Davis & Michael Wickersham Scholarship

Austin Lawrence—WCHS

Dr. Dianna K. Wolfe Memorial Scholarship

Cameron Whitesel—RSHS

Duane E. & Ruby M. Wickersham Scholarship

Alyssa Sheridan—WCHS

Elizabeth & Joe Gardner Scholarship

Kendra Holliger—WCHS

Ethan Cheesman Memorial Scholarship

Trisha Cline—UCCHS

Gary Horner Memorial Scholarship

Autumn Dixon—WCHS
Elizabeth Pegg—WCHS

Gene & Roberta Bennett Scholarship

Tarah Heuss—UCCHS
Gloria Godfrey-Larry Wasson Scholarship
Kora Kerns—UCCHS

Harry & Thelma Way Fuller Scholarship

Sarah Barr—WCHS

Herold Scholarship

Aaron Wallace—WCHS
Samantha Williams—WCHS

Inez M. Howe Scholarship

Taylor Ison—RSHS
Sierrah Love—WCHS

Ira & Olive Davisson Scholarship

Taylor Hayre—UCCHS
Michael Georgi—WCHS

Jack & Ione M. Carpenter Scholarship

Kendra Holliger—WCHS

Jason Rickert Memorial Scholarship

Kyle Reichard—UCCHS

Jay & Linda Wagner Memorial Scholarship

Austin Fritts—WCHS

Jay Gower Memorial Scholarship

Andrew Johns—MVHS

John B. Mallory Scholarship

Collin Klisavage—WCHS

Judge Charles P. Holdeman Scholarship

Elizabeth Pegg—WCHS

June Potter Memorial Scholarship

Grace Retter—WCHS

Kathy Harshman Leverenz Scholarship

Courtney Wise—UCCHS

Kellie Stephen Memorial Scholarship

Bethany Sloniker—MCHS
Brooke Bowen—RSHS
Faith Wilson—UCCHS
Katie Rismiller—UCCHS
Austin Lawrence—WCHS

Kevin Gulley Memorial Scholarship

Lee Owens—WCHS
Raven Moore—WCHS
Samuel Davis—WCHS

Merrett R. Monks Memorial Scholarship

Zachary Cline—WCHS

Michael Greene Memorial Scholarship

Christian Ford—WCHS

Mitch McCabe Memorial Scholarship

Gavin Bowling—WCHS

Monroe Central Alumni Assoc. Scholarship

Bethany Sloniker—MCHS
Steven Thomas—MCHS

Myrtle M. Adelsperger Scholarship

Madison Stachler—MVHS
Kierstan Wolfe-Stewart—UCCHS

Opal & Murray T. McGuire Scholarship

Elias Gates—WCHS
Gavin Bowling—WCHS

Philip A. Hawley Scholarship

Drake Moody—WCHS

Ralph W. Stuck Scholarship

Cale Dawson—MCHS

Randolph County Board of Realtors

Bianca Vazquez—UCCHS

Richard & Mamie Fields Scholarship

Michael Georgi—WCHS

Robert & Rachel Stump Scholarship

Gavin Bowling—WCHS

Robert G. Jones Scholarship

Sierrah Love—WCHS

Robert J. Litschert Memorial Scholarship

Gavin Bowling—WCHS

Rosemary Shockney Scholarship

Kendra Holliger—WCHS

Russell Symmes Scholarship

Shalyn Homan—WCHS

Ruth Bales Fisch Memorial Scholarship

Kianna Rice—WCHS

Stephen Family Scholarship

Andrew Pierce—MCHS
Michael Newby—NCHS
Yesha Solanki—UCCHS
Hailey Johnson—UHS
Elias Gates—WCHS
Elizabeth Pegg—WCHS

Tammy Hall Scholarship

Sarah Barr—WCHS

Union City Class of 1970 Scholarship

Hailey Mills—UCCHS
Julian Price—UCCHS

Union City High School S.A.D.D.

(Chet Mock Scholarship)

Payton Dean—UCCHS

Union City Kiwanis Club Scholarship

Tiana Davis—UCCHS

Union Township Alumni Scholarship

Hailey Johnson—UHS

Virginia Davis Crew Weber Scholarship

Grace Retter—WCHS

Wallace & Edna Fields Scholarship

Brayden Buckmaster—WCHS

Wanda Mann Scholarship

Kelsie Hunt—MVHS
Spencer Warren—MVHS
Kyle Reichard—UCCHS
Kierstan Wolfe-Stewart—UCCHS

Wickersham Memorial Scholarship

Julian Price—UCCHS

Winchester Area Chamber of Commerce

Malik Good—UCCHS

Winchester Athena Club Scholarship

Elizabeth Beatrice—MCHS

Winchester Eastern Star Scholarship

Student Name—UCCHS

Winchester Kiwanis Club Scholarship

Aaron Wallace—WCHS
Austin Lawrence—WCHS
Autumn Dixon—WCHS
Kendra Holliger—WCHS

Congratulations



Donors January 1, 2016-December 31, 2016

Amber Morrow Memorial Scholarship Fund

William & Sara Baldrige
Lisa L. Kerr
Scott Miller
Jerry & Melissa Musick
Navient*
Willie & Shirley Smith*
Glenna L. Vibbert
Robert & Jennifer Wells

Art Association of Randolph County Fund

Mel & Ann Barnell^^
James L. Davis^^
Robert K. Gentry & Barbara Landess-Gentry^^
Preservation Society of Union City, IN-OH^^
James & Mary Meinerding^^
Cathy Stephen Miller & Robert Thomas Miller^^

Atlas Fund

Wick's Pies

Butch Mullen Scholarship Fund

Cathy Stephen Miller & Robert Thomas Miller

Chip and Ruth Loney Fund

Chip & Ruth Loney+

Community Foundation Enrichment Fund

Mel & Ann Barnell^^
Dana Brown^^
Richard & Janet Clark^^
Christen A. Commers Smith & Brian Smith+
(In Honor of the Wedding)
Jenna De La Vega^^
Steven Degroff^^
Suzan Dillon Myers+
Mary Frances Feistritz^^
Indiana Marujun, LLC^^
Jane Flesher+
Betty Greenawalt^^
Charles & Sara Haviza^^
Sandra L. Hincey
Fred & Wanda House^^ *(In Memory of Ron House)*
David & Lisa Jennings^^
Burnita Johnting^^
Gary & Krista Kiser^^
Errol Klem Properties & Pat Klem^^
(In Memory of Frank Woolf, Harold Lawson, Harold Hawley, Duane Moore, Meta Sue Livingston, Dave Norris Mary McCoy, & Jay Hoyt)

Steve & Sue Longnecker^^
David & Barbara Ludington^^
Don & Terri Matchett^^
Bonnie L. Mayfield^^
Timothy & Claudia McCoy^^
Jon & Carol Meeks^^
Robert L. Morris & Co., P.C.^^
Thomas & Anita Newcom^^
Jim & Victoria Nunez^^
Duane & Judy Okerson^^
Skip & Sherry Overmyer
Johnnie & Lois Owens^^
Mark & Angela Rees^^
Wendy Smith^^

Cathy Stephen Miller & Robert Thomas Miller+
Dr Alison Syme & Dr. Marty Sulek^^
(In Memory of The Rev. Dr Ruth Syme)

Winchester Foundation^^

Daniel J. Wasson
Rodney & Camille Webb^^
Dick and Marilyn Williams^^
Phillip & Ruth Ann Zicht^^
Cigna Foundation
Dun-Pence DBA Walker Funeral Home^^

Community Foundation Operating Endowment Fund

David and Lisa Jennings
Stephanie Ward

Community Foundation Operating Fund

Indiana Philanthropy Alliance
Randolph County YMCA
First Merchants Private Wealth Advisors
Kathy Beumer
(In Memory of Theodosia Farquhar Moore)
Linda D. Brown
Jim & Deb Butcher
Kathy Davis-Brutchen
Phil & Linda DeHaven
Suzan Dillon Myers
Barbara A. Geyer
Betty Greenawalt
Jane & Damon Grove
Jack & Louise Hart
Scottie Harvey

Nancy Jensen
Elizabeth Helms
Betsy Jefferis
David & Lisa Jennings
Dawn Keys
Laura Martin
Ruth B. Mills
Lynn Orr
Beverly Schemmer *(In Memory of Hazel Fields)*
Dr Alison Syme & Dr. Marty Sulek *(In Memory of The Rev. Dr. Ruth Syme)*
Susan Symons
Sheryl Thurston
Heidi Van Note
Nicole Van Note
Stephanie Ward
Kevin Whitacre Charitable Trust
Good News Habitat for Humanity
Indiana Arts Commission

Donald Forrest Hahn & Wilma Fraley Hahn Mem Sch Fund

James Aschinger
Deborah Binkley
Douglas Brown
Kimberly Drone
Margret Dunning
Ann Fay
J.C Janak
Jennifer Jett
Brian Jones
Robert & Melody Kassing
Kim Laurin
Thomas T. Osborn
Deborah Peterson
John Quinn
G. Pearson Smith
Trevor Vance
Carol Weiss Kennedy
Bose McKinney & Evans LLP

Dr. David D. Davis and Michael D. Wickersham Scholarship Fund

Anonymous Donor
Dr. Dianna K. Wolfe Memorial Scholarship Fund
Jane Diggs Bogard

Evelyn Ann Abernathy Memorial Scholarship

Alden Abernathy

Farmland Public Library

Mel & Ann Barnell
Daniel & Andrea Lutz
Gary Horner Memorial Scholarship Fund
William B. Marshuetz
Gale Medler
Bettye L. Monks
Michael & Pam Necessary
Cathy Stephen Miller & Robert Thomas Miller

Gene & Roberta Bennett Scholarship Fund

Dr. Beth S. Bennett
Fidelity Charitable

Godfrey Wasson Scholarship Fund

First Clearing, LLC*

James and Linda Noffsinger Fund

(All Gifts in Memory of Jim Noffsinger)

George Abel^^
Rosa E. Alarcon
Bill & Valerie Baker^^
Mel & Ann Barnell^^
Paul Belland^^
Douglas & Patty Best^^
Amy Booher^^
Scott & Lisa Butt^^
Mick & Karen Carpenter^^
Bryan & Patricia Conklin^^
Linda & Robert Corcoran^^
William & Susan Coyne^^
Alan & Judith Culley^^
Robert & Jamie Davidson^^
Bill & Mary Davis^^
Phil & Linda DeHaven^^
Ray & Ruth Ekhooff^^
Margaret Jean English^^
Robert K. Gentry & Barbara Landess-Gentry^^
Richard & Connie Gettinger^^
John & Laura Gray^^
Owen & Toni Griffith^^
Kay Ann Harling^^
Emily & Kyle Hatfield^^
Ray & Donna Hedstrom^^
Blaine & Gwendolyn Herrick^^
John & Rebecca Hoffman^^
Mark & Sandra Horne^^

Jodi Hwang & Chien Hwang^^
Frank Miller Lumber Company, Inc.^^
Bradley & Sarah Jefferis^^
Beckie & Kurt Kahl^^
Keith & Carma Jo Kauffman^^
Mary & Kenneth Kauffman^^
William & Beverly Klepinger^^
Forrest & Susanna Lax^^
Jesse & Cynthia Lea^^
Preservation Society of Union City, IN-OH^^
Douglas & Cheryl LeMaster^^
Brad & Jennifer Livingston^^
(Gift is from Jenny & Brad Livingston, Brooke & Lauren Livingston, Brittany & Zach Ullrich)
Jack & Marlene Livingston^^
(Gift from Jack & Marlene Livingston, Dale & Trish Gelhaus, Ben & Bri Gelhaus, Erik & Lindsay Zicht, Josh & Ali Anderson)

Ivan & Barbara Marker^^

Martha Mathias^^
Faith & Taylor Mock^^
Elizabeth Moland^^
Derrick & Janet Mote^^
Rueyli Muhlfelder^^
George & Linda Noffsinger^^
Jack Noffsinger & Carol Maxfield^^
Jay & Sharon Noffsinger^^
Dick & Brenda Owens^^
Faith Pierce^^
Lila Pinney^^
Dennis & Pam Pratt^^
Dr. Susan K. Pyle^^
John & Prudence Schmidt^^
Neal & Lauren Schmidt^^
Kim Sharp-Rose^^
Bonita S. Small^^
Bete Smith^^
Wendy Smith^^
William & Anna Smith^^
Dr. Theresa Sowinski & Kenneth Sowinski^^
Lynn & Barbara Struthers^^
Angela Tarrant^^
Dorothy J. Tillman^^
Teresa Tillman^^
Teresa Turner^^
Kenneth & Vickie Wagner^^
David & Judy Washburn^^
Chester & Ann Wasson^^
Richard & Donna Webster^^
Lyle & Debbie Wiist^^

Delta Theta Tau Sorority Lambda Chapter^^
Illinois Tool Works Foundation^^
KCV Cycling Club Inc.
James M. Mock Memorial Scholarship Fund
Solid Design, Inc.
Jason Rickert Memorial Scholarship Fund
Jill R. Rickert*
Duane & Nancy Wright*
Jay & Linda Wagner Memorial Scholarship Fund
Lake City Bowl LLC

Jay-Randolph Development Services
Suzan Dillon Myers^^
Johnnie & Lois Owens^^
Cathy Stephen Miller & Robert Thomas Miller^^
Journey Home
Donna Hubbard
East Central Indiana Festivals Inc.
Kathy Harshman Leverenz Scholarship Fund
Caroll Bertke
Rheta Johnson

Kellie Stephen & Dave Furby Memorial Scholarship Fund
Ron & Danna Rae Anderson
MainSource Bank
Greg & Kathy Beumer
David & Patty Brumley
Jim Byrd
Rick & Torri Carey
Davis Chiropractic Offices
Lowell & Karen Drill
Clarissa Fine
Furby Distributing
Richard & Dianna Gough
Gregory & Elizabeth Hahn
Shannon Hartley
Stephen Hartley & Catherine Hall
Charles & Sara Haviza
Peter D. Haviza
D & D Hill Farms
Steve R. Howell
Dan & Suzie Jones *(In Memory of Kellie Stephen)*

*Indicates a match of \$.50/\$1 **Indicates a match of \$1/\$1 ^ Indicates a Lilly Match of \$.50/1 ^^Indicates a Lilly Match of \$1/\$1 +Indicates a Lilly Match of \$2/\$1

Donors January 1, 2016-December 31, 2016

Kellie Stephen & Dave Furby Memorial Scholarship Fund

Don & Barbara Keesling
Chip & Ruth Loney
Robert & Amy Lykins
Cris & Roxanne May
Nance & Welch Realty Group
Michael & Pam Necessary
David Patterson
Randolph County Republican Central Committee
John Rockhill
Mary Jo Shockley
Patricia Stephen
Cathy Stephen Miller & Robert Thomas Miller
Steve & Connie Stump
Richard Sutton
Harry G. Terrell
Steve & Marla Threewits
A & B Cafe
Alvin & Melissa Williams
Patrick Williams
Lilly Endowment Inc.
Old National Bancorp
Phi Delta Kappa Beta Eta Chapter
Wick's Pies

Kevin D. Gulley Scholarship Fund

John A. Boot
Conn's Collision Center
Richard T. Fast
Furby Distributing
Fred & Wanda Housel
John Housel
Steve R. Howell
Matchett & Company, Inc.
Errol Klem Properties & Pat Klem
Christopher & Janice Long
Nance & Welch Realty Group
Marcia Phillips
Thomas & Sharon Swingley
M & E Golf DBA Winchester Golf Club
Fred & Debra Veatch
Douglas & Rebecca Wicker
Community Storage 1, LLC
Dun-Pence DBA Walker Funeral Home
Jason's Meat Market
Mutual Bank
Phi Delta Kappa Beta Eta Chapter
Wick's Pies
Winchester Auto Truck

Lilly VI Community Project - Ward 5 School

Paul W. Beatty
Jack & Louise Hart
Mel & Ann Barnell
Barry & Jamra Banks^
Thomas & Linda Castaldi
Elizabeth Chamberlin^
Carolyn LaFollette
Bobby & Beverly Manning^
Kurt L. Prescott^
Brian Watters^
Country View Family Farms, LLC

Lykins Family Entrepreneurship Scholarship

Robert & Amy Lykins

Merrett R. Monks Scholarship Fund

William B. Marshuetz
Mrs. Bettye L. Monks

Monroe Central High School Alumni Association

Larry & Linda Faughnder
Mark & Julie Hooton
Monroe Central Alumni Association
Mench Financial, Inc.

Phillip A. Hawley Scholarship Fund

Mel & Ann Barnell*

Randolph County 4-H Fund

Joe Baldwin
Suzan Dillon Myers^^
Jane & Damon Grove* (In Memory of Ross Fause)
Linda K. Horner^^
David & Lisa Jennings^^
Dale & Peggy Moore^^
Gwendolyn Neumayr^^
Johnnie & Lois Owens^^
Kurt L. Prescott^^
Michael & Karla Reed^^
Kellon & Christina Robinson^^
Cathy Stephen Miller & Robert Thomas Miller^^

Randolph County Heroes Fund

Dr. Beth S. Bennett (In Honor of Gene & Roberta Bennett)
Bryan & Patricia Conklin^^ (In Honor of Dale & Velma Conklin)
Tina Farmer^^ (In Memory of Conrad R. Miranda III)
Rick Fisher^^ (In memory of Leonard Fisher)
Joel & Jane Flesher+ (In Honor of Ralph Johnting Jr.)
Robert K. Gentry & Barbara Landess-Gentry+
(In Honor of the City Employees of Union City)
Matchett & Company, Inc.+ (In Memory of Leonard Fisher)
Barbara Landess-Gentry^^
William Marshuetz & Kathryn Lahn
James & Mary Meinering+ (In Honor of the Lions Club)
Laura L. Northcutt^^ (In memory of David Northcutt)
Ralph T. Shierling^^ (In memory of Leonard Fisher)
Cathy Stephen Miller & Robert Thomas Miller+
Lions Club of Winchester, Inc.^^

Randolph County Literacy Coalition Fund

Suzan Dillon Myers^^
Bill & Joyce Husmann^^
Dale & Peggy Moore
Cathy Stephen Miller & Robert Thomas Miller
Stephanie Ward

Reach All Randolph County

First Merchants Private Wealth Advisors
Culy Construction & Power Services LLC
Culy Contracting
Alan & Elaine Schoonveld
Kiwanis Club of Winchester
Ohio Valley Gas Corp.
Omega Enterprises Inc.
Spartanburg United Methodist Church

Rickert-Shierling Educational Fund

Joseph Shierling
Sara Shierling

Robert and Rachel Stump Memorial Scholarship Fund

June Cook
Fred V. Bales
Mel & Ann Barnell
Alan & Mary Alice Bosler (Gift from Myrtle Huffer)
Vonda L. Branson (In Honor of Robert Stump)
Jerry & Joyce Brown
Douglas & Judith Brumfield
Nancy Brumfield
Aaron Chalfant
Cockerill & Cockerill
Gary & Jan Foulke
Ruth A. Fouts
Dr. Frank B. Hughes
Peggy Hummel
Lowell A. Lumpkin
Jodie Marker
Deborah Peterson
Karen Phipps
Kurt L. Prescott
Fred & Cynthia Pries
Leanne K. Regensburger
Rebecca Schafer
Stewart P. Smith
David & Mollie Steensland
Cathy Stephen Miller & Robert Thomas Miller
Stewart & Archbold Stewart
Tom Stewart
Ernest L. Thornburg
James & Mary Thornburg
Dorothy J. Tillman
Mr. Michael Wickersham
Denis J. Wiist
Mary Williams
David Wysong
Class of 1970 C/O Brian Edwards, Treasurer
Lake City Bowl LLC

Stephen Family Fund for Community Scholarships

Patricia Stephen
Cathy Stephen Miller & Robert Thomas Miller

Tammy Hall Scholarship Fund

Danny & Kathy Antrim
Charles Hall
Stephen Hartley & Catherine Hall

Thesaurus Fund - Randolph County Literacy Coalition

Randolph County Literacy Coalition

Thom and Janice Powers Fund

Linda D. Brown^^
Jay Jones^^

Union City Baseball Boosters

BASF Corporation

Union City Community Fund

Merna Brenner^
Martha Mathias^

Union City High School Class of 1970 Scholarship Fund

Dr. Beth S. Bennett
Deborah Chenoweth^
Margaret J. Curtner^
Becky Moore
William & Sandra Rice^ (In Memory of W. Scott Rice)
Vicki R. Seymour^
Daniel J. Wasson
Abramson Family Foundation, Inc^

Walter L. Shaw Music Scholarship Fund

Jane & Damon Grove^ (In memory of Bud Carpenter)

Whitacre Family Charitable Fund, In Honor of Lowell & Kathryn Whitacre

Kevin Whitacre Charitable Trust

Winchester Athena Club Students Scholarship Fund

Athena Club

Winchester Kiwanis Club Scholarship Fund

Kiwanis Club of Winchester

Women's Fund of Randolph County

Mel & Ann Barnell^^ (In Honor of Chris Greenman)
Melissa Black
Linda D. Brown
Nancy Brumfield (In Memory of Marcella Keys)
William & Linda Bush
Jim & Deb Butcher
Faye Chalfant (In Memory of Monnie Nixon)
Melba Conn
Kathy Davis-Brutchen
Phil & Linda DeHaven
Margaret Jean English
Jane Flesher
Barbara A. Geyer
Owen & Toni Griffith
Jane & Damon Grove (In honor of Linda Brown's retirement)
Jane & Damon Grove (In Honor of Angela Lowe & Brenda Tharp)
Jane & Damon Grove (In Memory of June Cass)
Scottie Harvey
Elizabeth Helms
Wanda Housel
Bill & Joyce Husmann
David & Lisa Jennings
Nancy Jensen
Matchett & Company, Inc.
Donald & Barbara Keesling Revocable Living Trust
Barbara Landess-Gentry
Chip & Ruth Loney
(In Memory of Leah Hoffman & Jane Stigleman)
Bobby & Beverly Manning
Bonnie L. Mayfield
Second Harvest Food Bank of East Central Indiana
Mary Meinering
Ruth B. Mills
Betty Moreland
Cari Prinkey
Beverly Schemmer
Jennifer Schroeder
Bud & Rosemary Sears
Lisa Short
Cathy Stephen Miller & Robert Thomas Miller
Gail Stewart O.D. & James Stewart
Dr Alison Syme & Dr. Marty Sulek
Marla Threewits
Heidi Van Note
Stephanie Ward
Mike & Julie Wickersham
Dick & Linda Wilcox
Alvin & Melissa Williams
Mary Williams
Mindy Winningham
Ruth Ann Zicht
Business & Professional Women's Club
Lynn Veterinary Hospital

YMCA Strong Communities Endowment

Jane & Damon Grove^^
Jack & Louise Hart^^
David & Lisa Jennings^^
Ms. Cheryl Jones^^
James & Mary Meinering^^
Cathy Stephen Miller & Robert Thomas Miller^^
Alvin & Melissa Williams^^

*Indicates a match of \$.50/\$1 **Indicates a match of \$1/\$1 ^ Indicates a Lilly Match of \$.50/1 ^^Indicates a Lilly Match of \$1/\$1 +Indicates a Lilly Match of \$2/\$1

Donors January 1, 2017-December 31, 2017

Jay & Linda Wagner Memorial Scholarship Fund

Howard & Debra Gibbs
Lake City Bowl LLC
Cathy Stephen Miller & Robert Thomas Miller
Jay-Randolph Development Services
Kathy Daly
Thomas & Linda Osborn*
Journey Home
James & Molly Helmick
Donna Hubbard

June Potter Memorial Scholarship Fund

Lowell A. Lumpkin*

Kathy Harshman Leverenz Scholarship Fund

Bill & Valerie Baker (In Memory of Brenda Harshman)
Charles & Carol Bertke*
(In Memory of Kathy Harshman & Rheta Johnson)
Annie Brannock (In Memory of Rheta Johnson)
Janet M. Caudle (In Memory of Rheta Johnson)
Lynn Cook (In Memory of Rheta Johnson)
Carroll Drew (In Memory of Rheta Johnson)
Samuel & Marilyn Farrington (In Memory of Rheta Johnson)
Gerstner Family Trust (In Memory of Rheta Johnson)
Raymond & Margaret Griffin (In Memory of Rheta Johnson)
Frances Johnson (In Memory of Rheta Johnson)
Rheta Johnson
Sonia & Robert Kaffenberger (In Memory of Rheta Johnson)
Gene & Susan Marsh (In Memory of Rheta Johnson)
Rachel Moystner (In Memory of Rheta Johnson)
David & Marilyn Nestor (In Memory of Rheta Johnson)
Jim & Gloria Saintignen (In Memory of Rheta Johnson)
Sharon Schmidt (In Memory of Rheta Johnson)
John & Wendy Smith
Randy & Roxanne St. Myers (In Memory of Rheta Johnson)
Cathy Stephen Miller & Robert Thomas Miller
(In Memory of Rheta Johnson)
Sondra Stocksdales (In Memory of Rheta Johnson)
Roselene Vickery (In Memory of Rheta Johnson)
Suzanne Weber (In Memory of Rheta Johnson)
Richard & Donna Webster (In Memory of Rheta Johnson)
Leonard & Maureen Wheeler (In Memory of Rheta Johnson)
Gary & Susan Wyckoff (In Memory of Rheta Johnson)

Kellie Stephen & Dave Furby Memorial Scholarship Fund

Aly Anderson
Ron & Danna Rae Anderson
Gerald & Beckie Baker*
Mel & Ann Barnell (In Memory of Bertha Mae Junco)
MainSource Bank
Stone Station Elevator, Inc. (In Memory of Bertha Mae Junco)
Stone Station Elevator, Inc.* (In Memory of Dave Furby)
Bogies Ice Cream*
David & Patty Brumley
Jordan Bryd
Jim Byrd
Rick & Torri Carey
Matthew & Cheryl Carothers (In Memory of Bertha Mae Junco)
Steve & Nancy Chalfant* (In Memory of Dave Furby)
Richard & Janet Clark* (In Memory of Dave Furby)
Cockerill & Cockerill* (In Memory of Dave Furby)
Karen Drill
Richard T. Fast* (In Memory of Dave Furby)
Jane Flesher
Howard & Debra Gibbs (In Memory of Dave Furby)
Dr. Mark & Donna Haggenjos*
Gregory & Elizabeth Hahn
Harold & Vicki Haney (In Memory of Kellie & Gerald Stephan)
Peter D. Haviza
Hawkins Insurance
Mark E. Hege* (In Memory of Dave Furby)
David & Kerri Hendrickson (In Memory of Bertha Mae Junco)
D & D Hill Farms* (In Memory of Dave Furby)
Steve R. Howell
Shelby J. Hoyt* (In Memory of Dave Furby)
Dan & Suzie Jones
Thad & Lisa Junco (In Memory of Bertha Mae Junco)
Don & Barbara Keesling
Errol & Pat Klem (In Memory of Bertha Mae Junco)
Kent & Jamei Kramer*
Dallas & Nikki Kunkle (In Memory of Kellie Stephen)
A.K. Locke* (In Memory of Dave Furby)
Chip & Ruth Loney
Terri Matchett* (In Memory of Dave Furby)
Cris & Roxanne May
Robert R. McCoy* (In Memory of Dave Furby)
Eric R. Mikels* (In Memory of Dave Furby)
Ben Mount
Dean Moland* (In Memory of Dave Furby)
Elizabeth Moland* (In Memory of Dave Furby)
Robert L. Morris & Co., P.C.
Michael & Pam Necessary

Thomas & Linda Osborn
David Patterson
Randolph County Republican Central Committee
William S. Richards & Dorothy B. Crawley
(In Memory of Bertha Mae Junco)
William E. Rinard* (In Memory of Dave Furby)
William & Jackie Runion*
Mike Rust* (In Memory of Dave Furby)
Michael Schopmeyer (In Memory of Bertha Mae Junco)
Kenneth & Mary Jo Shockley* (In Memory of Dave Furby)
John & Wendy Smith*
Karen Snyder* (In Memory of Dave Furby)
Patricia Stephen
(In Memory of Bertha Mae Junco, From Families of Patsie Stephen,
Steve & Connie Stump, Tom & Cathy Stephen Miller)
Cathy Stephen Miller & Robert Thomas Miller*
(In Memory of Dave Furby)
Steve & Connie Stump
Murray & Rebecca Sunday (In Memory of Bertha Mae Junco)
Judith Tanner* (In Memory of Dave Furby)
Harry Terrell
Kevin & Beverly Thomas
(In Memory of Bertha Mae Junco, From: The children of Howard & Grace,
Debra Frohnape, Roberta Thomas Bohrer, Rebecca Klug George Bohrer,
Kim Honaker, Robert Bohrer, Vicy Bohrer)
Steve & Marla Threewits
Rick & Kimberly Tudor* (In Memory of Dave Furby)
Robby Westenhaber* (In Memory of Dave Furby)
A & B Cafe
Mary J. Wickersham* (In Memory of Dave Furby)
Mike & Julie Wickersham*
Alvin & Melissa Williams
Mary Williams (In Memory of Bertha Mae Junco)
Mark & Joyce Wilson*
Bill & Ruth Yost (In Memory of Bertha Mae Junco)
Frauhiger Distributing LLC* (In Memory of Dave Furby)
Mutual Bank
Phi Delta Kappa Beta Eta Chapter
Stillwater Pepera (In Memory of Bertha Mae Junco)
Union Chapel Ministries, Inc.*
Wick's Pies

Kevin D. Gulley Scholarship Fund

John A. Boot
Conn's Collision Center
Richard T. Fast
Julie Furby
Peter D. Haviza
Hawkins Insurance
John Housel
Steve R. Howell
Beverly Jones
Matchett & Company, Inc.
Errol Klem Properties & Pat Klem
Christopher & Janice Long
Janice Long
Linda Moore
Nance & Welch Realty Group
Mary Jo Shockley
Tim B. Stipp
Thomas & Sharon Swingley
Ernest L. Thornburg
M & E Golf DBA Winchester Golf Club
Ohio Valley Gas Corp.
Douglas & Rebecca Wicker
A & B Cafe
Best Way of Indiana, Inc.
Community Storage 1, LLC
Dun-Pence DBA Walker Funeral Home
Mutual Bank
Phi Delta Kappa Beta Eta Chapter
Wick's Pies
Winchester Auto Truck

Kylee Renee Wells Scholarship Fund

Mel & Ann Barnell
Gregory & Michelle Buckingham
Kelly & Susan Cook
Jeremy Harris
David L. Kroger
Deborah A. Liss
Stephanie Pfisterer
John W. Smith
Richard D. Swoveland & Kelly Carter
Art Association of Randolph County

Leon & Ruhama Hendrickson & Family Scholarship Fund

Leon Hendrickson Estate
Ron & Danna Rae Anderson
William E. Bierly
Janice Botkin
Randle Bowmer
Robert & Melody Brown

Jan & Mary Ann L. Chalfant
Cockerill & Cockerill
Marsha Cockerill & Elaine Burgauer
Claude E. Davis MD & Jeanne Davis
Douglas & Lea Ann Davis
James Donahue III & Carol Donahue
Bill Fivaz
Kenneth E. Fowble
Jeff & Mary Lynn Garrett
Steven & Rita Graft
Raymond & Linda Gregson
John Gulde
Dana Haggenjos
Gregory & Elizabeth Hahn
Vicki Haney
Peter D. Haviza
Scott & Edna Hawkins
Janet Helfich
James & Molly Helmick
David & Debra Hendrickson
Silver Towne
Stan & Gretchen Hendrickson
Paul Hollis
Richard & Roberta Howard
Myrtle I. Huffer
Mary Louise Hunt
Eleanor L. Keppler
Steve & Sue Longnecker
Jodie Marker
Ghyslain & Susan Maurais
Elizabeth Moland
Garner L. Moore
Linda K. Moore
Steven & Joan O'Connell
Harold & Diana Ozburn
Christopher & Carla Peacock
Kathryn Petry
Doug & Joyce Phipps
Dr. Susan K. Pyle
Frank E. Sheetz, Jr.
David E. Smies
William & Lori Ann Smoot
Harvey & Harriet Stack
Patricia Stephen
Dorothy J. Tillman
Rodney & Camille Webb
Victor Whitehead
Linda Whitenack
Scott Wickersham
Dr. V. R. Williams
Mary Williams
Mark F. Wilson
Timothy & Sue Wolfe
Allen's Coin Shop, Inc.
AM & ST Associates LLC DBA Silver Towne Mint
A-Mark Precious Metals, Inc.
Central States Numismatic Society
Dillon Gage Inc. Of Dallas
Errol Klem Properties
Estate Jewelry & Coin
JFM Trading LLC
John Brownell DBA A to Z Jewelry & Coin Exchange
Julian M Leidman, Inc. / Bonanza Coins
Kirk Kelly Rare Coin
McIntire Rare Collectibles
Oliver Family Properties LLC
Record Coin Shop - II
Richard Howard Inc
Sailboat Coins & Currency
Stacks-Bowers Numismatics, LLC
Standard Numismatics
Texas Numismatic Investments, Inc.
The Numismatic Financial Corporation, Inc.
The Oliari Charitable Foundation Inc
Toledo Coin Exchange, Inc

Merrett R. Monks Scholarship Fund

Randy & Judy Keys*
William B. Marshuetz*
Mrs. Bettye L. Monks*
Helen I. Snyder (In Honor of Betty Monks 90th Birthday)
Michael Greene Memorial Fund
Jan Crouch
Cathy Stephen Miller & Robert Thomas Miller
Mary Williams
Mitch McCabe Memorial Scholarship Fund
Michael McCabe
Thomas & Linda Osborn
Brent Smith
Mary Williams

*Indicates a match of \$.50/\$1 **Indicates a match of \$1/\$1 ^ Indicates a Lilly Match of \$.50/\$1 ^^Indicates a Lilly Match of \$1/\$1 + Indicates a Lilly Match of \$2/\$1

Donors January 1, 2017-December 31, 2017

Monroe Central High School Alumni Association

Jane & Damon Grove
Mench Financial, Inc.

Monroe Central Scholarship Fund

Larry & Shirley Hall

Phillip A. Hawley Scholarship Fund

Mel & Ann Barnell*
Laura L. Northcutt*
Mary Williams

Preservation Society Of UC, IN OH Fund

John & Wendy Smith*

Randolph County 4-H Fund

Jane & Damon Grove *(In Memory of Thomas Flesher)*
Jane & Damon Grove* *(In Memory of Carlton Flesher)*
Jane & Damon Grove* *(In Memory of Grace Baxter)*
Lowell A. Lumpkin*
Jeff & Karen Oswalt*
Cathy Stephen Miller & Robert Thomas Miller
(In Memory of Thomas Flesher)

Monsanto Fund

Randolph County Cancer Patients Fund
David & Nancy Brumfield* *(In Memory of Betsy Toschlog)*
Fred & Wanda Housel *(In Memory of Ronald Housel)*
Errol & Pat Klem *(In Memory of Janet Terrill)*
Errol & Pat Klem* *(In Memory of Nancy Lay)*

Randolph County Heroes Fund

Ernest L. Thornburg* *(In Memory of Ernest Thornburg Sr.)*

Randolph County Literacy Coalition Fund

Richard & Donna Webster*
Alvin & Melissa Williams*

Randolph County Veterans Services Fund

Jane & Damon Grove *(In Memory of John Tanner)*

Randolph County Women's Fund Endowment

Ceann Bales**
Mel & Ann Barnell**
Linda D. Brown**
Jim & Deb Butcher**
Kathy Davis-Brutchen**
Suzan Dillon Myers**
Jack & Louise Hart**
David & Lisa Jennings**
Ruth B. Mills**
Johnnie & Lois Owens**
Ronn & Trisha Shumaker**
Nicole Van Note**
Stephanie Ward**
Business & Professional Women's Club**

Randolph County YMCA Pool Maintenance Fund

Chris & Doreen Culy*
Louise Lingner*
Alvin & Melissa Williams*
Dr. V. R. & Marilyn Williams*
(In Memory of Mr. & Mrs. Francis Simpson)

Randolph Eastern Music Boosters Fund

Gene & Susan Marsh

Reach All Randolph County Fund

First Merchants Private Wealth Advisors

Rickert-Shierling Educational Fund

Carolyn LaFollette

Robert & Rachel Stump Memorial Scholarship Fund

Alan & Mary Alice Bosler*
Kathy Daly
Ann Dutton
Linda Groth
Linda K. Horner
Dr. Frank B. Hughes* *(In Memory of Carolyn Sorrow Stump)*
Max Jennings
Jeffrey & Martia Runkle
Sickels Tree Farm
David Stump M.D.*
Mary Williams
Barry & Carol Wood

Rosemary Shockney Memorial Scholarship

Lake City Bowl LLC

St. Vincent Randolph Hospital Fund

Mel & Ann Barnell**
Greg & Kathy Beumer**

James & Mary Meinerding**

Stephen Family Fund for Community

Scholarships

Harold & Vicki Haney*
(In memory of Kellie & Gerald Stephen)
Shannon Hartley* *(In Memory of Kellie Stephen)*
Stephen Hartley & Catherine Hall*
Patricia Stephen*
Cathy Stephen Miller & Robert Thomas Miller

Tammy Hall Scholarship Fund

Danny & Kathy Antrim
Charles Hall
Stephen Hartley & Catherine Hall
Christopher & Carla Peacock
Cathy Stephen Miller & Robert Thomas Miller
Clint & Melanie Walker
Mary Williams

Thom & Janice Powers Fund

Thom & Janice Powers*

Union City Community Fund

Merna Brenner
Janey & Homer Carrico
James L. Davis

Union City High School Class of 1970 Scholarship Fund

Jody Adelsperger
Dr. Beth S. Bennett*
Deborah Chenoweth
Margaret J. Curtner*
Melanie Deal
John Frazee
William & Sandra Rice* *(In Memory of Alan Denney & Wayne Stewart)*
Vicki R. Seymour

Union City Public Library Fund

Dana Brown**
Margaret Jean English**
Bill & Joyce Husmann**
Thomas E. Leakey**
Lila Pinney**
John & Wendy Smith*
Rick & Kimberly Tudor**

Walter L. Shaw Music Scholarship Fund

Steven & Irene Shaw*
Lawrence & Caryl Sparks*
Wesley United Methodist Church
Merna Brenner
Richard & Donna Webster

Whitacre Family Charitable Fund, In Honor of Lowell & Kathryn Whitacre

Kevin Whitacre Charitable Trust*

White River Township Volunteer Fire Department Fund

White River Township Volunteer Fire Department

Winchester Athena Club Student Scholarship Fund

Elizabeth Beatrice
Linda Campbell
Cockerill & Cockerill
Gerald & Betty Greenawalt *(In Memory of Robert McCulloch)*
Peggy Hummel *(In Memory of Norma Suddeth)*
Peggy Hummel *(In Memory of Pat Woods)*
Claire Smith *(In Memory of Norma Suddeth)*
Athena Club

Winchester Community Library Fund

Linda D. Brown**
Chris & Doreen Culy**
Thomas & Linda Osborn*
Rick & Kimberly Tudor**
Stephanie Ward**
Alvin & Melissa Williams**
Mary Williams

Winchester Kiwanis Club Scholarship Fund

Kiwanis Club of Winchester
Winchester Main Street Fund
Mary Williams

Women's Fund of Randolph County

Randolph County YMCA
Heather Ballin
Mel & Ann Barnell *(In Honor of Christine Greenman)*
Kathy Beumer
Linda D. Brown
Melissa Brutchen
William & Linda Bush
Jim & Deb Butcher
Alison Cockerill
Chris & Doreen Culy
Kathy Davis-Brutchen
Suzan Dillon Myers
Margaret Jean English
Linda Fetters
Diane Fisher
Jane Flesher
Janet Fowler
Richard L. Gause
Barbara A. Geyer
Betty Greenawalt
Owen & Toni Griffith *(In Memory of Sharon E. Mitchell)*
Jane & Damon Grove *(In Memory of Norma Suddeth)*
Jane & Damon Grove *(In Memory of Martha McGuire)*
Violet Hall

Edna J. Hawkins
Elizabeth Helms
Linda K. Horner
Wanda Housel
David & Lisa Jennings
Nancy Jensen
Matchett & Company, Inc.
Donald & Barbara Keesling Revocable Living Trust
Paulette Kelly
Dawn Keys
Ashleigh Lawrence
Steve & Sue Longnecker
Bobby & Beverly Manning
Bonnie L. Mayfield
Timothy & Claudia McCoy
Second Harvest Food Bank of East Central Indiana
Mary Meinerding
Judy C. Mullin *(In Honor of Ruth Mills)*
Judy Oakerson
Lynn Orr
Christopher & Carla Peacock
Ms. Karen L. Pittman
Thom & Janice Powers
Becky Price
Cari Prinkey
Sandie Rowe
Beverly Schemmer *(In Memory of Hazel Fields)*
Sara Shierling
Lisa Short
Helen I. Snyder *(In Honor of Bettye Monks)*
Gail Stewart O.D. & James Stewart
Dr. Alison Syme & Dr. Marty Sulek
(In Memory of The Rev. Dr. Ruth Syme)
Susan Symons
Phyllis Thum
Sheryl Thurston
Heidi Van Note
Nicole Van Note
Art Association of Randolph County
Karen Vinson
Stephanie Ward
Mike & Julie Wickersham
Rick & Linda Wilcox
Mary Williams
Mrs. Marilyn S. Williams
Mindy Winningham
Ruth Ann Zicht
Good News Habitat for Humanity
Lynn Veterinary Hospital
YMCA Strong Communities Endowment
Jane & Damon Grove*
Gary & Krista Kiser
Alvin & Melissa Williams*



*"Those who are happiest
are those who do the
most for others"*
Booker T. Washington

*Indicates a match of \$.50/\$1 **Indicates a match of \$1/\$1 ^ Indicates a Lilly Match of \$.50/1 ^^Indicates a Lilly Match of \$1/\$1 +Indicates a Lilly Match of \$2/\$1

Fund Types

UNRESTRICTED ENDOWMENT FUND OR COMMUNITY GRANTS

The flexibility created by the Unrestricted Fund allows the Foundation to respond to unexpected opportunities, creative proposals and unforeseen emergencies in Randolph County.

DONOR ADVISED FUNDS

This type of fund is especially helpful for donors, who for tax or estate planning reasons, want to take a tax deduction one year and spread the contributions over future years.

AGENCY ENDOWMENT FUNDS

Agencies and organizations create endowment funds as a way to secure their future. By establishing an endowment within the Randolph Community Foundation, the nonprofit group builds assets that the Foundation will manage.

FIELD OF INTEREST FUNDS

Field of interest funds allow donors to address an issue or cause they care deeply about without naming specific charities. The Foundation takes a contributor's concerns into consideration when making grants to appropriate programs that fit within the donor's category of concern.

DESIGNATED FUNDS

These funds benefit specific eligible organizations selected by the donor. If an organization ceases to exist or changes its purpose, the Foundation Board of Directors preserves the donor's intention by redirecting the funds to an organization with a similar purpose.

SCHOLARSHIPS

All scholarship recipients are listed on the Foundation's website at randolphcountyfoundation.org. Scholarships are great for donor's wishing to invest in Randolph County through higher education. Scholarships may be used to further the education of graduates from a particular high school, students in a specific field, or those enrolled at a chosen institution. Donors are able to set the criteria for applicants.

CHARITABLE GIFT ANNUITIES

Charitable Gift Annuities are funds established by donors who have made a gift to the Foundation and retain a lifetime income interest. At their passing, the remainder will be used for charitable purposes.

LIFE ESTATES

A Life Estate is a gift of the remainder interest in a personal residence or farm by irrevocably transferring the title to the Foundation while retaining the right to the use of the property during their life.

LIFE INSURANCE

Life insurance provides a simple way for you to give a significant gift to the Foundation with tax benefits that you can enjoy during your lifetime.

LEGACY

Recognizes dedication to our community's future. The Legacy acknowledges individuals who have demonstrated commitment to their community by including The Community Foundation in their estate planning.



New Funds

2016

Amber Morrow Memorial Scholarship Fund
Chip & Ruth Loney Endowment Fund
Education Success Coalition Fund
Elizabeth Gardner Scholarship Fund
James & Linda Noffsinger Fund
Journey Home Fund
Randolph County Heroes Fund
Reach All Randolph County Fund
Robert & Rachel Stump Memorial Fund
Starr Family Fund
Thom & Janice Powers Fund
Wesley United Methodist Church Fund
Wick's Employee Giving Fund
Whitacre Family Charitable Fund

2017

Donald Forrest Hahn & Wilma Fraley Hahn Scholarship Fund
Kellie Stephen & Dave Furby Memorial Scholarship Fund (Name Change Only)
Kylee Renee Wells Scholarship Fund
Leon & Ruhama Hendrickson & Family Scholarship Fund
Michael Greene Memorial Scholarship Fund
Mitch McCabe Memorial Scholarship Fund
Randolph County Women's Endowment Fund
Rural Randolph Cares Agricultural Endowment Fund
White River Township Volunteer Fire Department Fund

Existing Funds

Consider investing in what matters most - the charitable and cultural needs of the children, youth, senior citizens, and the families of Randolph County. Since 1993, organizations in our community have continued to receive valuable grants from The Community Foundation's Unrestricted Community Enrichment Fund. If you would like to donate today and help make an investment in our community, indicate below how much money you would like to give to the foundation.

Arts & Culture

Art Association of Randolph County Endowment Fund
Goodrich Bandshell Endowment Fund
Max & Dianne Jones Music Lesson Scholarship Fund (new in 2018)

Community Betterment

1875 Randolph County Courthouse Ren. & Maintenance Fund
Agnes Monks Hunter Memorial Fund
Brady Allen McCarthy Memorial Fund
Chip & Ruth Loney Endowment Fund
Duane E. and Ruby M. Wickersham Memorial Endowment Fund
Elma Laverna Hawley Cemetery Endowment Fund
Environmental Education Fund
James & Linda Noffsinger Endowment Fund
Maurais Acorn Fund
Randolph County Bicentennial Plaza Fund (new in 2018)
Randolph County Heroes Endowment Fund
Randolph County Leadership Fund
Rural Randolph Cares Agricultural Endowment Fund
Russell Symmes Endowment Fund
Starr Family Endowment Fund
Thom & Janice Powers Endowment Fund
Union City Community Endowment Fund
Whitacre Family Charitable Endowment Fund
Wick's Employees Giving Fund
Welcoming Indiana's Next Generation WINGS Fund (new in 2018)

Community Organizations

Community Foundation Operating Endowment Fund
Harter Fund-American Red Cross Randolph County
Historic Farmland USA Endowment Fund
Jay-Randolph Developmental Services Endowment Fund
Preservation Society of Union City, Indiana-Ohio Endowment Fund
Randolph County 4-H Endowment Fund
Randolph County Cancer Patients Fund
Randolph County Literacy Coalition Fund
Randolph County Veterans Services Fund
Randolph County YMCA Pool & Maintenance Endowment Fund
Randolph County YMCA Strong Community Endowment Fund
Reach All Randolph County Fund
St. Vincent Randolph Hospital Endowment Fund
Second Harvest Food Bank Fund
The Journey Home Fund
Union City Baseball Boosters Fund
Union City Public Library Endowment Fund
Union City Skate Club Fund
Wesley United Methodist Church Endowment Fund
White River Township Volunteer Fire Department Fund
Winchester Community Library Endowment Fund
Winchester Main Street Fund
Women's Fund of Randolph County

Existing Funds Continued

The Community Foundation of Randolph County is proud to celebrate life. Through memorial gifts & tributes, we continue to build endowments, and create an enduring legacy for generations in Randolph County. Instead of material gifts, give to an endowment to honor your friends, family, or business

Education

529 Randolph County Promise Community Fund (new in 2018)
529 Randolph County Promise Operating Fund
Randolph County Promise Fund (*new in 2018*)
Randolph County Promise Endowment Fund (new in 2018)
Randolph Eastern Music Boosters Fund

Scholarships

Adelsperger Family Fund
Amber Morrow Memorial Scholarship Fund
Ann & Wayne Hinchman Scholarship Fund
Beatrice E. Hughes Scholarship Fund
Butch Mullen Memorial Fund
Charles F. Passmore Memorial Fund
Dellarose Sickels Fund
Donald Forrest Hahn & Wilma Fraley Hahn Fund
Donnabelle Gaylor Fund
Dorothy Allen Memorial Fund
Dr. David D. Davis & Michael D. Wickersham Fund
Dr. Dianna K. Wolfe Fund
Duane & Ruby Wickersham Mem. Sch. Fund
East Central Opportunities Fund
Elizabeth & Joe Gardner Fund
Elma Laverna Hawley Scholarship Fund
Environmental Education Fund
Ernest & Idabelle Ray Scholarship Fund (new in 2018)
Ethan Cheesman Memorial Fund
Evelyn Ann Abernathy Fund
Gary Horner Memorial Fund
Gene & Roberta Bennett Fund
Gloria Godfrey & Larry Wasson Fund
Harry Fuller & Thelma Way Fuller Fund
Herold Scholarship Fund
Inez M. Howe Memorial Fund
Ira and Olive Davisson Fund
Jack & Ione Carpenter Fund
James M. Mock Memorial Fund
Jason Rickert Memorial Fund
Jay & Linda Wagner Memorial Fund
Jay Gower Memorial Fund
Judge Charles P. Holdeman Fund

June Potter Memorial Fund
Kathy Harshman Leverenz Fund
Kellie Stephen and Dave Furby Memorial Scholarship Fund
Kevin Gulley Memorial
Kylee Renee Wells Fund
Leon & Ruhama Hendrickson & Family
Lykins Family Entrepreneurship Fund
Merrett R. Monks Fund
Michael Greene Fund
Mitch McCabe Fund
Monroe Central HS Alumni Assoc. Fund
Monroe Central High School Fund
Myrtle M. Adelsperger Fund
Opal & Murray McGuire Fund
Phillip A. Hawley Fund
Ralph W. Stuck, Jr. Fund
Randolph County Board of Realtors Fund
Richard & Mamie Fields Fund
Rickert-Shierling Educational Fund
Robert & Rachel Stump Fund
Robert G. Jones Fund
Robert J. Litschert Fund
Rosemary Shockney Memorial Fund
Russell Symmes Scholarship Fund
Ruth Bales Fisch Fund
Stephen Family Community Fund
Tammy Hall Scholarship Fund
U&C Scholarship Fund
UCCHS Class of 1970
UCCHS SADD Fund (Chet Mock Memorial)
Union City Kiwanis Club Fund
Virginia Davis Crew Weber Fund
Wallace L. & Edna V. Fields Fund
Walter L. Shaw Music Fund
Wanda M. Mann Fund
Winchester Area Chamber of Commerce
Winchester Athena Club Student Fund
Winchester #60 Order of East Star Ida & Charles Burke Fund
Winchester Kiwanis Club Fund



Impact your community by Giving @ randolphcountyfoundation.org



Statements of Financial Position

As of December 31, 2016

ASSETS

Cash and cash equivalents	\$ 182,592
Interest receivable	15,814
Grants receivable	22,130
Other receivables	-
Investments	8,703,296
Unconditional promises to give	-
Property and equipment, net	\$ 4,181
	\$ 8,928,013

LIABILITIES AND NET ASSETS

LIABILITIES

Accounts payable and accrued expenses	\$ 2,141
Scholarships and grants payable	247,031
Deferred revenue	-
Funds held for others	390,435
	639,607

NET ASSETS

Unrestricted	\$ 2,345,030
Temporarily restricted	5,943,376
	\$ 8,288,406
	\$ 8,928,013

As of December 31, 2017

ASSETS

Cash and cash equivalents	\$ 264,987
Interest receivable	16,981
Grants receivable	22,547
Other receivables	882
Investments	9,414,802
Unconditional promises to give	-
Property and equipment, net	13,519
Prepaid expenses	2,629
	\$ 9,736,347

LIABILITIES AND NET ASSETS

LIABILITIES

Accounts payable and accrued expenses	\$ 2,887
Scholarships and grants payable	256,530
Deferred revenue	-
Funds held for others	430,674
	690,091

NET ASSETS

Unrestricted	\$ 2,514,456
Temporarily restricted	6,531,800
	\$ 9,046,256
	\$ 9,736,347



Statement of Activities

As of December 31, 2016

PUBLIC SUPPORT AND REVENUE	Unrestricted	Temporarily Restricted	Total
Contributions and grants	\$ 328,701	\$ 143,724	\$ 472,425
Pass-thru grant – IAC RAP	-	166,335	166,335
Investment income	42,024	110,247	152,271
Net realized gain on investments	18,285	46,668	64,953
Net unrealized gain on investments	79,958	218,961	298,919
Administrative fee revenue	14,935	-	14,935
Other income	-	-	-
Total Public Support and Revenue	483,903	685,935	1,169,838
NET ASSETS RELEASED FROM RESTRICTIONS	592,310	(592,310)	-
	1,076,213	93,625	1,169,838
EXPENSES			
Program services	683,092	-	683,092
Management and administrative	64,022	-	64,022
Fund development	17,479	-	17,479
Total Expenses	764,593	-	764,593
CHANGE IN NET ASSETS	311,620	93,625	405,245
NET ASSETS			
Beginning of year	2,033,410	5,849,751	7,883,161
End of year	2,345,030	5,943,376	8,288,406

As of December 31, 2017

PUBLIC SUPPORT AND REVENUE	Unrestricted	Temporarily Restricted	Total
Contributions and grants	\$ 33,055	\$ 147,664	\$ 180,719
Pass-thru grant – IAC RAP	-	213,121	213,121
Investment income	47,914	126,338	174,252
Net realized gain on investments	80,574	215,189	295,763
Net unrealized gain on investments	171,485	452,097	623,582
Administrative fee revenue	21,266	-	21,266
Other income	1,913	-	1,913
Total Public Support and Revenue	356,207	1,154,409	1,510,616
NET ASSETS RELEASED FROM RESTRICTIONS	565,985	(565,985)	-
	922,192	588,424	1,510,616
EXPENSES			
Program services	655,848	-	655,848
Management and administrative	77,372	-	77,372
Fund development	19,546	-	19,546
Total Expenses	752,766	-	752,766
CHANGE IN NET ASSETS	169,426	588,424	757,850
NET ASSETS			
Beginning of year	2,345,030	5,943,376	8,288,406
End of year	2,514,456	6,531,800	9,046,256





COMMUNITY FOUNDATION of RANDOLPH COUNTY

BRINGING PEOPLE & RESOURCES TOGETHER



120 W. Washington St. | Winchester IN 47394



765.584.9077



765.584.7710



<http://www.randolphcountyfoundation.org>



[facebook.com/randolphcountyfoundation](https://www.facebook.com/randolphcountyfoundation)



twitter.com/CFofRC



Contact Us and say, **"I'm Going Green!"**



INDIANA ARTS
COMMISSION
MAKING THE ARTS HAPPEN

Region 5 Arts Partner



Excellence. Accountability. Impact.™

Confirmed in compliance with
National Standards for U.S.
Community Foundations

Mission Statement

The Community Foundation of Randolph County, Inc. seeks to bring people and resources together to strengthen the quality of life, both now and in the future, for the residents of Randolph County. To accomplish this mission, the Foundation will:

- Initiate and support programs and organizations
- Provide philanthropic leadership
- Effectively direct resources of community donors
- Administer a permanent pool of endowed funds in a professional manner
- Be a community convener
- Give grants and scholarships
- Provide donor services

Vision Statement:

Our vision is to improve the quality of life in Randolph County through generosity that lasts for generations.

