



Community Foundation of Randolph County

*Bringing people and resources together to enrich
the lives of Randolph County residents.*

Board of Directors

Skip Overmyer, President
Susan Maurais, V. President
Linda Brown, Treasurer
Jane Grove, Secretary

Anita Amspaugh
Paula Cheesman
Leesa Friend
Dick Gause
Larry Hall
Cheryl Jones
Ryan Prinkey
Aaron Shoemaker, M.D.
Sheryl Thurston
Mary Wise

Emeritus Honorees

Janet Clark
Jack Cox
Jim Davis
Mike Gilbert
H. Allan Heuss
D. Allen Jefferis
Suzan Dillon Myers
Kim Peterson

Administrative Staff:

Ruth B. Mills
Executive Director
Judy C. Mullin
Administrative Coordinator

Inside this issue:

15th Anniversary Celebration Sponsors	2
County Scholarship Recipients	2
Lilly Scholarship Recipients	3
Spring Grant Awards	4
Insert: What is the Foundation & Fund List	

Volume 2, Issue 1

Spring 2008

CFRC CELEBRATES 15 YEARS

Over 100 people gathered together at the Community Center in Union City to celebrate the 15th Anniversary of the Community Foundation of Randolph County, Inc..

Allen Jefferis talked about the early years of the Foundation and the decision to place proceeds from the old hospital in Union City into the Foundation. This established the Union City Fund which provides grants for Union City organizations.

Chad Spencer talked about the importance of the Foundation to A Community Christmas, an annual

holiday event benefiting thousands of people.

Gene Bennett talked about the benefits of donating to the fund and the benefits to both the donor and the community.

Misty Hollis talked about how Foundation grants benefit the programs and services of Camp Yale.

Master of Ceremonies and Board Member Ryan Prinkey recognized past board members and announced the Director Emeritus.

Board Member Paula Cheesman presented checks to the Spring 2008 grant recipients.

EMERITUS HONOREES ANNOUNCED

Eight former Community Foundation Board Members were honored May 1st at the 15th Anniversary. Each received the prestigious status of Director Emeritus, giving them all rights and privileges of Board Members except for voting.

The Board of Directors of the Foundation elected to honor those past members who have donated 10 years of service to the Foundation. This is the maximum number of years a Board Member can serve according to the Foundation's By-Laws.

Those members receiving their awards in person were Jim Davis and Allen Jefferis of Union City, and Suzan Dillon Myers of Lynn. Kevin Cox received the award for his father Jack Cox. Others honored with this

award but not present include Allan Heuss, Union City; Mike Gilbert, Winchester; Janet Clark, Lynn; and Kim Peterson, Union City.

It is through the dedication and service of these individuals, along with other past board members, that the Foundation has grown.

Founding Board Members honored were Gene Bennett, Allan Heuss, Chris Lay, Kent Heckley, Dave Anderson, Tim Heuss, Brad Jefferis, Jim Byrd, Ginger Shaffer, Duane Hobley, Terri Matchett, and Janet Clark. Deceased Founding Members are June Potter, Richard Applegate and Raymond Fouts.

Past Board Members recognized were Rev. Don Brenneman, Mary Ann Chalfant, Gail Croyle, Bruce Fidler, Richard Gough, Ray Griffin, Gene Hammers, Eldred King, George Mapes, Ron Medler, Kent Mullen, Harriet Peden, Al Peters, Tina Root, Marcia Sickels, Beth Sherrow, Helen Snyder and Dr. John Williams.



Confirmed in compliance with
National Standards for U.S.
Community Foundations.

Thank you to the following sponsors who helped make the 15th Anniversary Celebration a success.

GOLD EVENT SPONSORS

Anchor Glass
Edward Jones
Frank Miller Lumber Company
Ghyslain Chocolatier
J & J Vending and Catering

SILVER TABLE SPONSORS

First Merchants Trust Company
Matchett and Ward Insurance
Old National Bank
St. Vincent Randolph Hospital
Richard and Mary Wise

BRONZE SPONSORS

First Financial Bank
Productive Concepts, Inc.
Reid Hospital & Health Care
Union City Medical Center
Wick® Pies

DONORS

Greg and Kathy Beumer



President Skip Overmyer speaking to the 15th Celebration audience.

2008 Community Foundation of Randolph County Scholarship Recipients

Mississinawa Valley High School

Nathan Brunk, *Jay Gower Memorial Scholarship*
Ashlee Grow, *Jay Gower Memorial Scholarship*

Monroe Central High School

Christopher Chalfant, *Ralph Stuck Memorial Scholarship*
Kyra Conatser, *Stephen Family Community Scholarship*
Matthew Garringer, *Lilly Scholarship Finalist*
Brandon Newton, *Herold Scholarship*
Patrick Qualls, *DARE Randolph County*
Joseph Tyring, *Kellie Stephen Memorial Scholarship*

Randolph Southern High School

Rebekah Allen, *Lilly Scholarship Finalists*
Rebekah Allen, *Kellie Stephen Memorial Scholarship*
Amanda Green, *DARE Randolph County Scholarship*
Amanda Green, *Lilly Scholarship Finalists*
Lauren Miller, *Lilly Scholarship Finalists*
Lucas Poole, *Lilly Scholarship Finalist and Alternate Recipient*

Union High School

Chase Craig, *Union Township Alumni Scholarship*
Natalia Campbell, *Union Township Alumni Scholarship*
Katrina Hirst, *Union Township Alumni Scholarship*
Crystal Prescott, *Athena Club Scholarship*
Crystal Prescott, *Ira and Olive Davisson Scholarship*
Zachary Price, *DARE Randolph County Scholarship*
Zachary Price, *Stephen Family Community Scholarship*

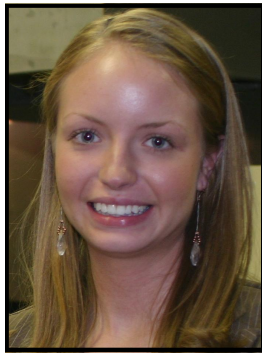
Cole Smith, *Kellie Stephen Memorial Scholarship*
Dereck White, *Union Township Alumni Scholarship*

Union City Community High School

Sara Armstrong, *Lilly Scholarship Recipient*
Roy Frazier, *Jason Rickert Memorial Scholarship*
Jade Hill, *Lilly Scholarship Finalist*
Katie Hufford, *Lilly Scholarship Finalist*
Taylor B. Jenkinson, *Winchester Area Chamber of Commerce Scholarship*
Kerri Lynn McIntosh, *Walter L. Shaw Music Scholarship*
Stephanie Mock, *Union City Kiwanis Club Scholarship*
Joshua Price, *Dellarose Sickels Scholarship*
Sarah Tennerly, *Adelsperger Family Scholarship*
Sarah Tennerly, *Kellie Stephen Memorial Scholarship*
Megan Lynne Wasson, *Godfrey-Wasson Scholarship*

Winchester Community High School

Kyle Anderson, *Beatrice Hughes Scholarship*
Malina Baker, *DARE Randolph County Scholarship*
Malina Baker, *Robert Litschert Memorial Scholarship*
Olivia Baldwin, *Robert G. Jones Scholarship*
Stephanie Bigelow, *"Butch" Mullen Memorial Scholarship*
Stephanie Bigelow, *Virginia Crew Davis Weber Scholarship*
Bruce Culy, *Ira and Olive Davisson Scholarship*
Matthew Daly, *Lilly Scholarship Finalist*
Matthew Daly, *Charles Passmore Memorial Scholarship*
Debbie Davis-Brutchen, *Ann & Wayne Hinchman Scholarship*



Grace Wallace and Sarah Armstrong are the recipients of the 2008 Lilly Scholarships. Grace will be attending Butler University, majoring in English. Sarah will be attending Purdue for pre-veterinary science.

The Lilly Scholarship is a 4-year scholarship that can be used only for tuition and required fees to any college within the State of Indiana. In addition, there is an \$800 stipend for books.

The committee selected 10 students from 53 applicants to be interviewed. Wallace and Armstrong were selected as recipients. The 10 finalists, pictured right are (from L to R). Sarah Armstrong, Katie Hufford, Luke Poole, Jade Hill, Rebekah Allen, Amanda Green, Matthew Garringer, Lauren Miller, Matthew Daly, and Grace Wallace

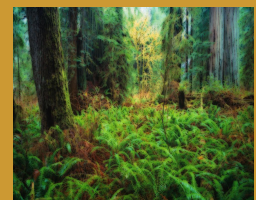
Luke Poole was chosen as the Alternate recipient and received a \$1,000 scholarship from the Foundation. The other finalists each received a \$500 scholarship from the Foundation.



Cory Dines, *Wallace and Edna Fields Scholarship*
 Brock Edwards, *Kevin Gulley Memorial Scholarship*
 Jarren Fair, *Kevin Gulley Memorial Scholarship*
 Kelsey Hart, *Ruth Bales Fisch Memorial Scholarship*
 Philip Cody Hammer, *Harry and Thelma Way Fuller Memorial Scholarship*
 Steven Hibbard, *Merrett B. Monks Vocational Scholarship*
 Daniel Maggert, *Kevin Gulley Memorial Scholarship*
 Daniel Maggert, *Opal & Murray McGuire Scholarship*
 Lynlea Mayfield, *Opal & Murray McGuire Scholarship*
 Brock Morrison, *Herold Scholarship*
 Brock Morrison, *John B. Mallory Scholarship*
 Seth Painter, *Charles Church Memorial Scholarship*
 Emily Peacock, *Donnabelle Gaylor Scholarship*
 Shane Peacock, *Stephen Family*

Community Scholarship
 Jonathan Solomon, *Virginia Crew Davis Weber Scholarship*
 Landon Smith, *Jack W. and lone Carpenter Scholarship*
 Grace Wallace, *Lilly Scholarship Recipient*
 Brock Ward, *Judge Charles P. Holdeman Scholarship*
 Brock Ward, *Kevin Gulley Memorial Scholarship*
 Brittney White, *Richard and Mamie Fields Scholarship*
 Kellie White, *Beatrice Hughes Scholarship*
 Lucas Wickersham, *Kellie Stephen Memorial Scholarship*

The Community Foundation congratulates all of the outstanding Randolph County Schools. All of the scholarships listed are Community Foundation Funds established by individuals and groups for the express purpose of assisting deserving students with their educational costs.



CHINESE PROVERB:

One generation plants the trees; another gets the shade.



**COMMUNITY
FOUNDATION OF
RANDOLPH
COUNTY, INC.**

213 South Main Street
Winchester IN 47394

Phone: 765-584-9077
Fax: 765-584-7710

CFRC is on the Web at
www.cfrandolphcounty.org

They who give have all
things; they who with-
hold have nothing.—
Hindu proverb

Non-Profit Org.
U.S. Postage
PAID
Winchester, IN
Permit No. 213

SPRING 2008 GRANT AWARDS ANNOUNCED

The Community Foundation awarded \$19,100 in grant awards on May 1

AVID Program, Union City Community High School· \$1,500 from Union City Fund

Camp Yale—Randolph County Kids, Inc.· \$500 from the Community Enrichment Fund

Downtown Revitalization Group/UC Preservation Society· \$600 from the Union City Fund

Drug Free Randolph County· \$750 from the Community Enrichment Fund

Historic Farmland· \$1,500 from the Community Enrichment Fund

Jay Randolph Developmental Services· \$1,000 from the Community Enrichment Fund

Randolph County Convention and Visitors Bureau· \$1,000 from the Community Enrichment Fund

Randolph County Economic Development Corporation· \$500 from the Community Enrichment Fund

Randolph County Sheriff Department· \$750 from the Community Enrichment Fund

Randolph Eastern Music Boosters· \$2,500 from the Union City Fund

State Line Heritage Days· \$4,000 from the Union City Fund

Union City Chamber of Commerce· \$1,500 from the Union City Fund

West Side Middle School, Randolph Eastern Schools· \$1,000 from the Union City Fund